

SSD1502 Display Driver

for

The CyberDisplay[®] VGA Color Display

Part Numbers:

KCD-A900-QA (TQFP80 package)

KCD-A900-QA-TP (BGA80 package)

Ver. 0.1

August 14, 2006



TABLE OF CONTENTS

| | | |
|-----------|--|-----------|
| 1 | GENERAL DESCRIPTION | 5 |
| 2 | FEATURES | 5 |
| 3 | ORDERING INFORMATION | 5 |
| 4 | BLOCK DIAGRAM | 6 |
| 5 | PIN DESCRIPTION | 7 |
| 6 | FUNCTIONAL BLOCK DESCRIPTIONS | 10 |
| 6.1 | DEINTERLACE..... | 10 |
| 6.2 | SCALING | 11 |
| 6.3 | GAMMA CORRECTION | 12 |
| 6.4 | DISPLAY CONTROLLER | 12 |
| 6.5 | BACKLIGHT CONTROLLER | 13 |
| 6.6 | COLOR SPACE CONVERSION | 13 |
| 6.7 | SELF-TEST TEST PATTERN CONTROLLER..... | 13 |
| 6.8 | STEREO VIDEO SUPPORT | 14 |
| 6.9 | BUILT-IN SELF-TEST MEMORY | 16 |
| 6.10 | I ² C INTERFACE | 16 |
| 6.10.1 | I ² C Write Format | 16 |
| 6.10.2 | I ² C Read Format | 16 |
| 6.11 | DIGITAL VIDEO INTERFACE | 18 |
| 6.11.1 | NTSC/PAL input signal..... | 18 |
| 6.11.2 | RGB/YCbCr 24-bit input signal with external sync signal..... | 19 |
| 6.11.3 | Serial interface signal..... | 20 |
| 6.12 | ANALOG CIRCUITS | 22 |
| 6.12.1 | D/A Converter..... | 22 |
| 6.12.2 | Power Down Control | 23 |
| 6.12.3 | External Capacitors..... | 23 |
| 7 | INTERNAL REGISTER DESCRIPTION | 24 |
| 7.1 | GLOBAL AND TG CONTROL REGISTER | 24 |
| 7.2 | BUFFER CONTROL REGISTER..... | 34 |
| 7.3 | DV DISPLAY REGISTER | 35 |
| 7.4 | DSP CONTROL REGISTER | 37 |
| 7.5 | DIGITAL VIDEO INTERFACE CONTROL REGISTER | 41 |
| 8 | MAXIMUM RATINGS | 43 |
| 9 | DC CHARACTERISTICS | 44 |
| 9.1 | RECOMMENDED DC OPERATING CONDITIONS | 44 |
| 10 | AC CHARACTERISTICS | 45 |
| 11 | APPLICATION EXAMPLES | 49 |
| 12 | PACKAGE INFORMATION | 51 |
| 12.1 | SSD1502QT4 OUTLINE DIMENSION..... | 51 |
| 12.2 | SSD1502G32 OUTLINE DIMENSION | 53 |

TABLE OF TABLES

| | |
|--|----|
| Table 1 - Ordering Information..... | 5 |
| Table 2 - Pin description..... | 7 |
| Table 3 - Standard NTSC and PAL format..... | 11 |
| Table 4 - I ² C Slave Address Selection..... | 16 |
| Table 5 - Signal mapping in different digital video input interface..... | 18 |
| Table 6 - Signal requirements for various decoders and formats..... | 19 |
| Table 7 - Signal requirement for RGB/YCbCr 24-bit input interface connection..... | 19 |
| Table 8 - Signal requirement for 10/12-wire serial interface format..... | 21 |
| Table 9 - Internal Register Table..... | 24 |
| Table 10 - Maximum Ratings (Voltage Referenced to V _{SS})..... | 43 |
| Table 11 - DC Characteristics T _A = 0°C - 70°C, VDD = 3.3V [±] 5%, VSS=0V..... | 44 |
| Table 12 - AC Characteristics (Unless otherwise specified, Voltage Referenced to VSS, VDD = 3.3V, TA = -30 to 85°C) | 45 |
| Table 13 - Display Panel interface timing..... | 46 |

TABLE OF FIGURES

| | |
|--|----|
| Figure 1 – SSD1502 Block Diagram | 6 |
| Figure 2 - System block Diagram | 10 |
| Figure 3 -Functional Block Diagram | 10 |
| Figure 4 - Horizontal Scaling (6:5)..... | 11 |
| Figure 5 - Vertical Scaling (6:5)..... | 11 |
| Figure 6 -Piecewise-linear Gamma Function..... | 12 |
| Figure 7 - Backlight output timing diagram..... | 13 |
| Figure 8 -Block diagram of PWM controller..... | 13 |
| Figure 9 - Field stereo video interleave output image..... | 14 |
| Figure 10 - Progressive Input Control for field interleave mode..... | 15 |
| Figure 11 - Line stereo video interleave output image | 15 |
| Figure 12 - Progressive Input Control for field interleave mode..... | 16 |
| Figure 13- 10-wire serial interface..... | 20 |
| Figure 14- 12-wire serial interface..... | 20 |
| Figure 15 - DAC Output Connection for the external component..... | 22 |
| Figure 16- Output Voltage Level versus timing of DAC output in AC driving mode..... | 22 |
| Figure 17 - Output Voltage Level versus timing of DAC output in DC driving mode..... | 23 |
| Figure 18 -8-bit Video Data Input Timing..... | 45 |
| Figure 19 -16/24-bit Video Data Input Timing..... | 45 |
| Figure 20 -Display Panel Interface Timing Diagram of Progressive Mode..... | 47 |
| Figure 21 -Display Panel Interface Timing Diagram of Deinterlace Mode..... | 48 |

1 General Description

SSD1502 is a highly integrated controller solution to *KOPIN CyberDisplay® VGA VGA microdisplay*, together with the analog driver. It includes all the timing control, image processing, buffer control, data transaction units, a scaling buffer memory, and three 8-bit DACs. It provides a low power timing control signal for the analog chip and employs a gated-clock ASIC design to achieve a low power solution.

The controller chip supports digital input formats. Digital inputs are formatted by the Horizontal and Vertical Scaling block to achieve 640x480 output pixels. There is YCbCr to RGB conversion block and a Gamma Correction block for add on data processing. Three 8-bit DACs convert 8-bit digital video data to 1Vpp analog video signal. It generates digital control signals and analog video data to the microdisplay and analog chip.

2 FEATURES

- Support TV-Decoder image inputs using CCIR601 format or digital VESA VGA with separate sync
- Compatible video decoders include Philips SAA7111A and SAA7113
- Digital input formats:
 - NTSC and PAL video (support rectangle and square pixel variants)
 - BT656, with sync information in SAV/EAV blocks (8-bit words @ 27MHz)
 - 4:2:2 YCbCr (8-bit words @ 27MHz or 16-bit words @ 13.5MHz)
 - 16-bit RGB (5,6,5) @ 13.5 MHz
 - VESA VGA video
 - 480p RGB/YCbCr with separate sync signals which Hsync, Vsync and Pixel clock (Pclk) (24-bit words @ 25-36MHz).
 - Serial wire interface for YCbCr video input source
- NTSC/PAL and VESA VGA resolution
- Flexible Horizontal and Vertical scaling
- Programmable 9 entries gamma correction
- I²C interface
- NTSC and PAL Deinterlace
- Embedded line buffer for scaling
- Triple integrated 8-bit DAC
- Programmable control of PWM color backlight flash timing with external pin to control duty cycle
- Programmable timing control of CyberDisplay VGA display.
- Core and I/O 3.3V operating voltage
- Stereo Video support
- TQFP and BGA package available

3 ORDERING INFORMATION

| Ordering Part Number | Package Form |
|----------------------|--------------|
| KCD-A900-QA | TQFP80 |
| KCD-A900-QA-TP | BGA80 |

Table 1: Ordering Information

4 BLOCK DIAGRAM

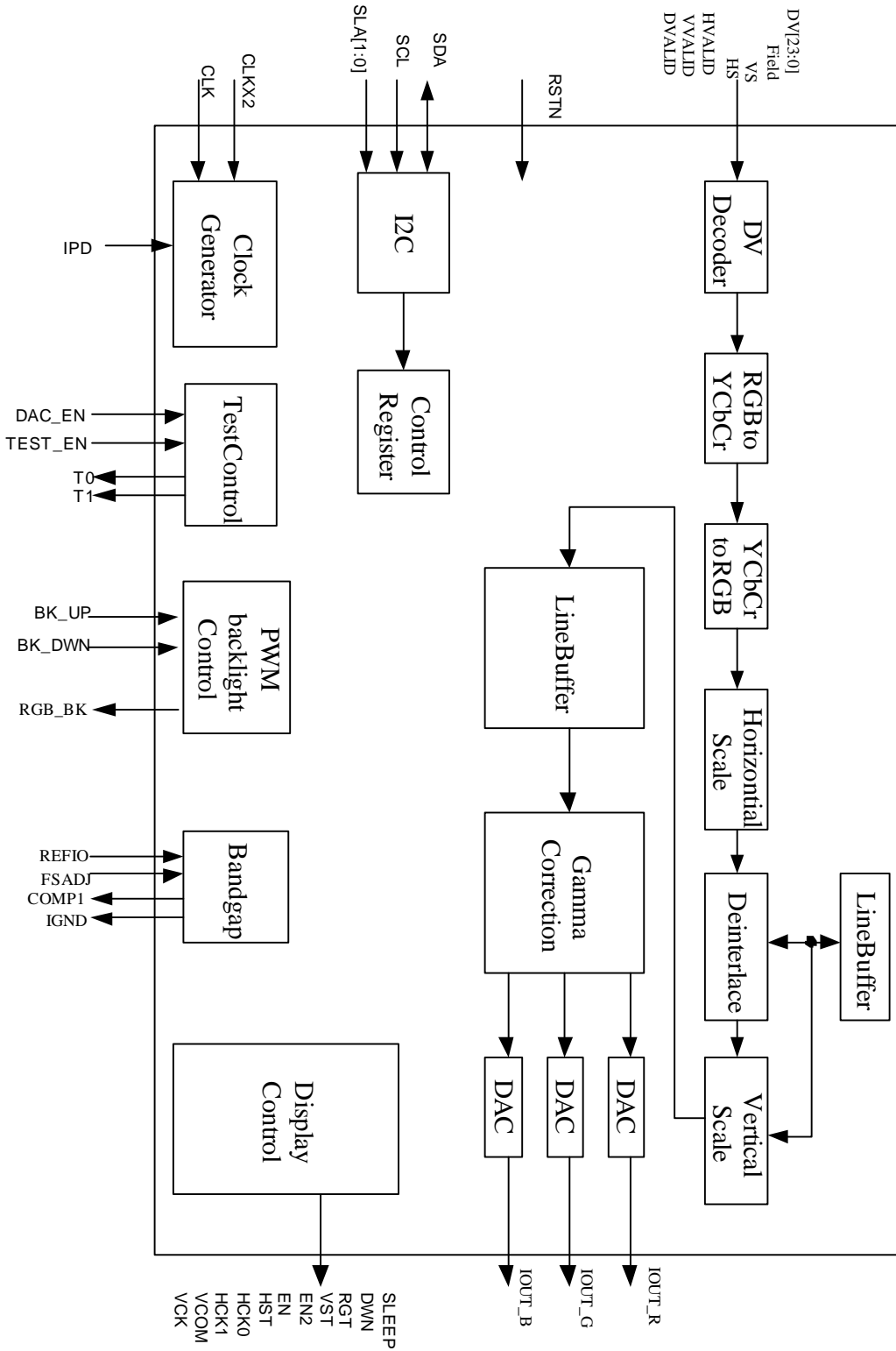


Figure 1: SSD1502 Block Diagram

5 PIN DESCRIPTION

Table 2: Pin Description

| TQFP pin no. | BGA pin no. | Name | Direction | Pin Description |
|--------------|-------------|--------|-----------|---|
| 1 | J1 | DV23 | I | Digital video input |
| 2 | H2 | DV22 | I | Digital video input |
| 3 | G3 | DV21 | I | Digital video input |
| 4 | F4 | RSTN | I | System reset |
| 5 | J2 | CLKX2 | I | External 2X clock input |
| 6 | H3 | CLK | I | External clock input |
| 7 | G4 | DV20 | I | Digital video input |
| 8 | F5 | DV19 | I | Digital video input |
| 9 | J3 | DV18 | I | Digital video input |
| 10 | H4 | DV17 | I | Digital video input |
| 11 | G5 | T1 | O | Test output signal 1 |
| 12 | J4 | DVSS | P | Digital VSS power |
| 13 | H5 | DVDD | P | Digital VDD power |
| 14 | G6 | BK_DWN | I | Backlight PWM duty down |
| 15 | J5 | BK_UP | I | Backlight PWM duty up |
| 16 | H6 | BK_RGB | O | Backlight Control |
| 17 | J6 | SDA | I/O | Serial data input/output for I2C bus |
| 18 | H7 | SCL | I | Serial clock input for I2C bus |
| 19 | J7 | SLA1 | I | I2C slave address setting |
| 20 | J8 | SLA0 | I | I2C slave address setting |
| 21 | J9 | IPD | I | External Power Down Control. VDD for power down. VSS for Normal |
| 22 | H8 | NC | - | - |
| 23 | G7 | SLEEP | O | Sleep Mode |
| 24 | F6 | DWN | O | Top-to-bottom scan |
| 25 | H9 | RGT | O | Left-to-right scan |
| 26 | G8 | VST | O | Vertical start pulse |
| 27 | F7 | EN2 | O | Row Enable for Field stereo panel 2 |
| 28 | E6 | EN | O | Row Enable |
| 29 | G9 | HST | O | Horizontal start pulse |
| 30 | F8 | HCK0 | O | Horizontal clock 0 |
| 31 | E7 | HCK1 | O | Horizontal clock 1 |
| 32 | F9 | DVDD | P | Digital VDD power |
| 33 | E8 | DVSS | P | Digital VSS power |
| 34 | D7 | TEST1 | I | Internal test pin, connect to ground by default |
| 35 | E9 | TEST2 | I | Internal test pin, connect to ground by default |
| 36 | D8 | VCOM | O | Common ITO electrode |
| 37 | D9 | VCK | O | Vertical clock |
| 38 | C8 | NC | - | - |
| 39 | C9 | NC | - | - |
| 40 | B9 | NC | - | - |

| TQFP pin no. | BGA pin no. | Name | Direction | Pin Description |
|---------------------|--------------------|-------------|------------------|--|
| 41 | A9 | AVSS | P | Analog VSS power |
| 42 | B8 | AVDD | P | Analog VDD power |
| 43 | C7 | IOUTB | AO | DAC current output port for blue video output |
| 44 | D6 | IOUTG | AO | DAC current output port for green video output |
| 45 | A8 | IGND | AO | Current Ground. Connect to AVSS for normal operation |
| 46 | B7 | IOUTR | AO | DAC current output port for red video output |
| 47 | C6 | COMP1 | AO | Bandwidth/noise reduction node. Add 0.1 uF to AVSS for optimum performance |
| 48 | D5 | FSADJ | AI | DAC Full-scale current output adjustment. Add an external resistor between this pin and AVSS |
| 49 | A7 | REFIO | AI | Bandgap Input Voltage Reference. |
| 50 | B6 | NC | - | - |
| 51 | C5 | DVDD | P | Digital VDD power |
| 52 | A6 | DVSS | P | Digital VSS power |
| 53 | B5 | TEST3 | I | Internal test pin, connect to ground by default |
| 54 | C4 | TEST4 | I | Internal test pin, connect to ground by default |
| 55 | A5 | T2 | O | Test output signal 2 |
| 56 | B4 | FIELD | I | Field input signal |
| 57 | A4 | DV7 | I | Digital video input |
| 58 | B3 | DV6 | I | Digital video input |
| 59 | A3 | DV5 | I | Digital video input |
| 60 | A2 | DV4 | I | Digital video input |
| 61 | A1 | DV3 | I | Digital video input |
| 62 | B2 | DV2 | I | Digital video input |
| 63 | C3 | DV1 | I | Digital video input |
| 64 | D4 | DV0 | I | Digital video input |
| 65 | B1 | DV15 | I | Digital video input |
| 66 | C2 | DV14 | I | Digital video input |
| 67 | D3 | DV13 | I | Digital video input |
| 68 | E4 | DV12 | I | Digital video input |
| 69 | C1 | DV11 | I | Digital video input |
| 70 | D2 | DV10 | I | Digital video input |
| 71 | E3 | DV9 | I | Digital video input |
| 72 | D1 | DV8 | I | Digital video input |
| 73 | E2 | DVSS | P | Digital VSS power |
| 74 | F3 | DVDD | P | Digital VDD power |
| 75 | E1 | HVALID | I | Horizontal valid input signal |
| 76 | F2 | VVALID | I | Vertical valid input signal |
| 77 | F1 | DVALID | I | Data Valid input signal |
| 78 | G2 | HS | I | Horizontal sync input signal |
| 79 | G1 | VS | I | Vertical sync input signal |
| 80 | H1 | DV16 | I | Digital video input |

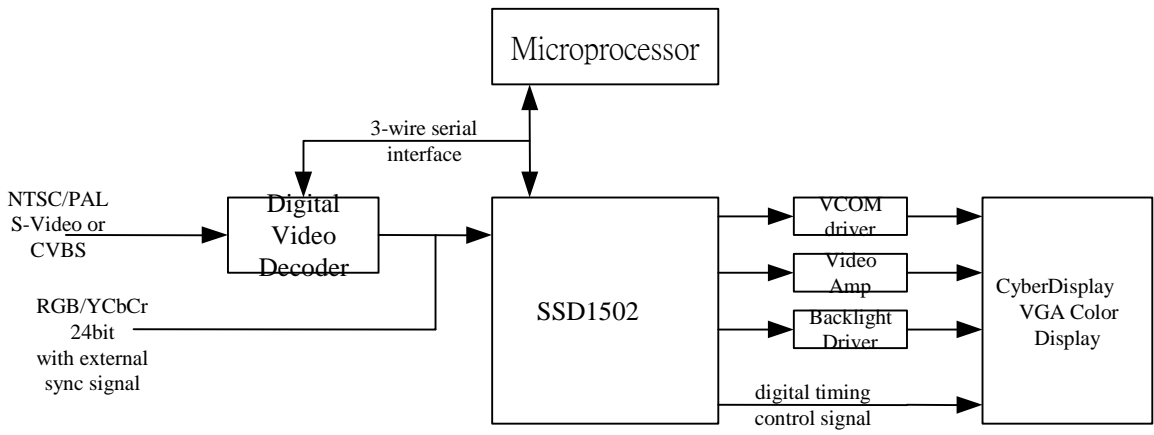
Pin Type Description

I – digital input pad;
O – digital output pad;
I/O – digital bi-directional pad;
AI – analog input;
AO – analog output;
P – Power pad

6 FUNCTIONAL BLOCK DESCRIPTIONS

The SSD1502 converts standard digital video for the Kopin CyberDisplay™ VGA display. A typical system block diagram is shown below. The SSD1502 provides all necessary digital control signals to the display. Integrated DAC output analog video signals to the external amplifiers.

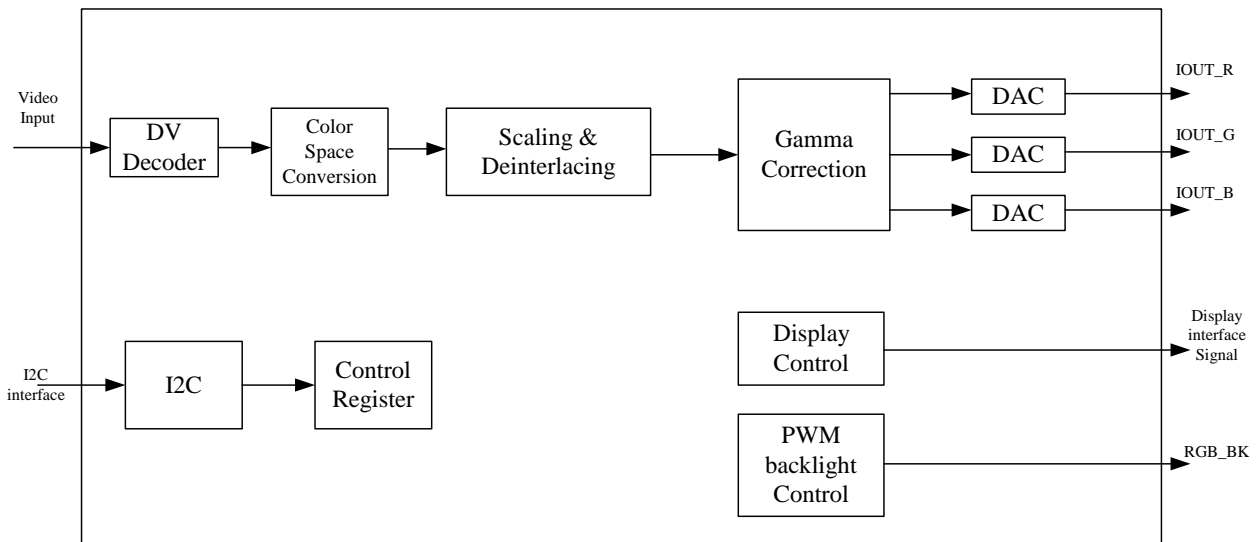
Figure 2: System Block Diagram



The SSD1502 accepts digital video signals directly, or an external decoder may be used for analog video inputs. The I²C bus is used to program both the decoder and the SSD1502.

Figure 3 shows the functional blocks within the SSD1502, each of which is discussed below.

Figure 3: Functional Block Diagram



6.1 Deinterlace

For NTSC/PAL video input requires deinterlacing to enhance the image quality. The purpose scheme is as following:

1. Double Line Buffer
2. Median Filter

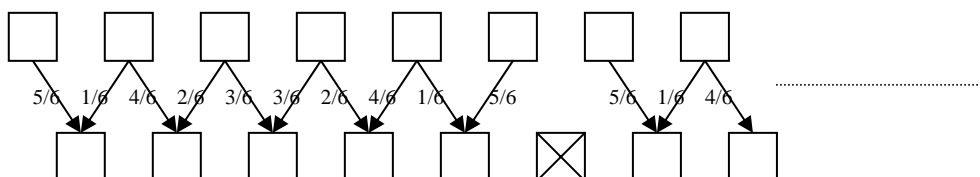
6.2 Scaling

After the digital video decoder, the line will be discarded as the standard format. Table 3 shows the standard NTSC/PAL format. Each line output by the digital video interface contains 640 RGB samples. A 9:8 and 6:5 scaling operation is required to fit the display resolution from 720 to 640 columns and 768 to 640 columns. The horizontal scale also provides 11:10 scaling to perform. Each line with 720 pixels is cropped 8 pixels at both the front and back of each line and then performs 11:10 scaling to fit 640 pixel sizes. Figure 4 illustrates the decimation algorithm of 6:5, in which each output pixel is the weighted average of two input pixels. Other scaling is performed with a similar algorithm.

Table 3: Standard NTSC and PAL format

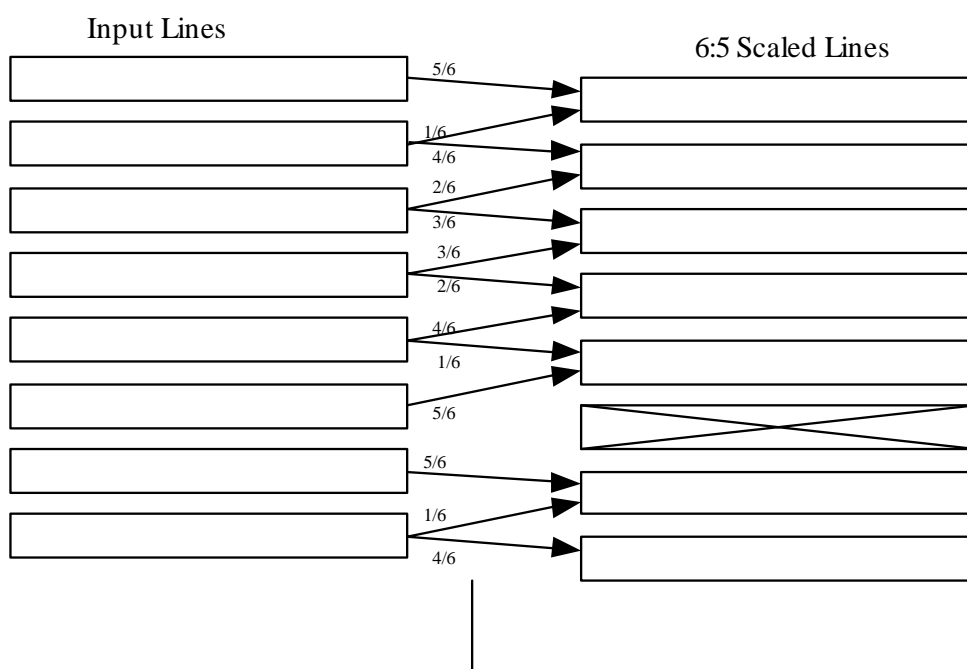
| Format | Horizontal Pixel Size | Vertical Size |
|----------------|-----------------------|---------------|
| Rectangle NTSC | 720 | 480 |
| Rectangle PAL | 720 | 576 |
| Square NTSC | 640 | 480 |
| Square PAL | 768 | 576 |

Figure 4: Horizontal Scaling (6:5)



The NTSC format has 480 valid lines in the odd and even fields after deinterlacing. However, the PAL format requires 6:5 vertical scaling to fit 576 input lines into 480 display lines. The algorithm of the vertical scale is similar to that used in the horizontal case. The vertical scaler is automatically bypassed when the NTSC input video format is used.

Figure 5: Vertical Scaling (6:5)



6.3 Gamma Correction

The SSD1502 features a programmable gamma correction feature to compensate for the display's non-linear electro-optical response. A 9-entry lookup table (LUT) specifies a piecewise-linear function. Intermediate values are interpolated from the nearest LUT entries.

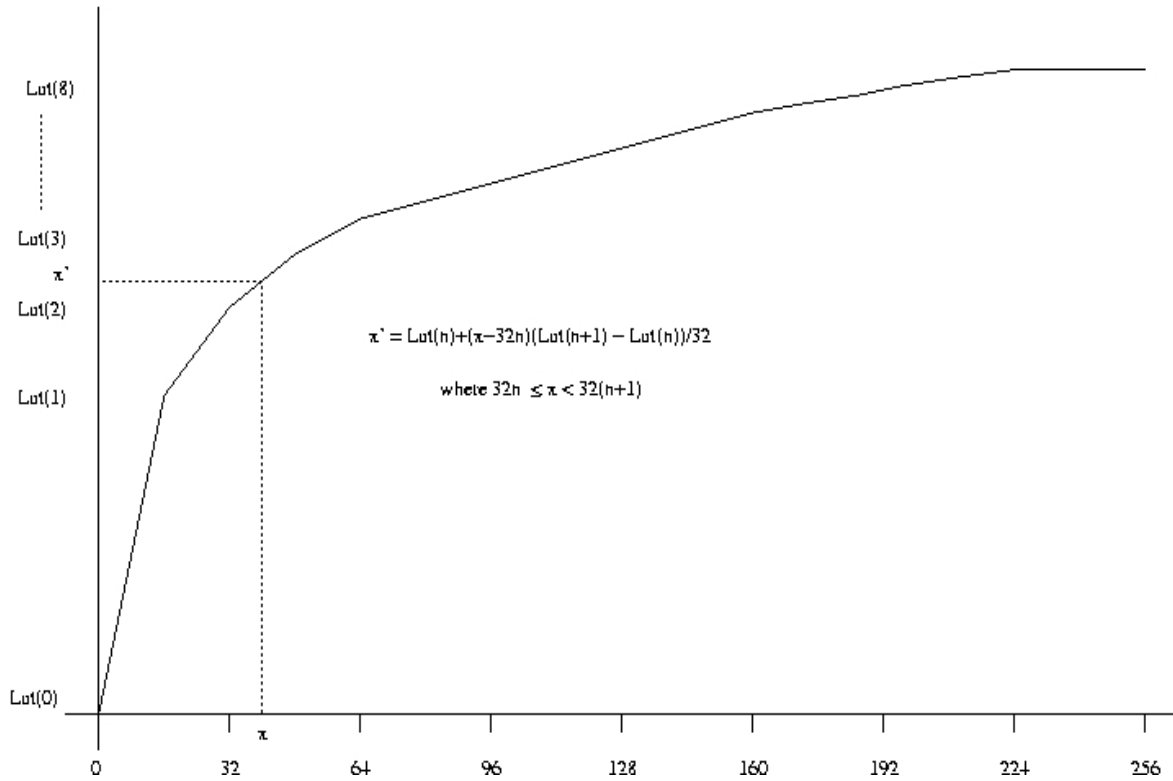


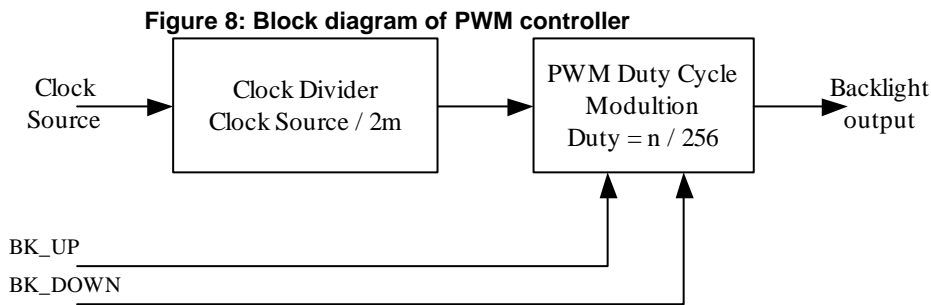
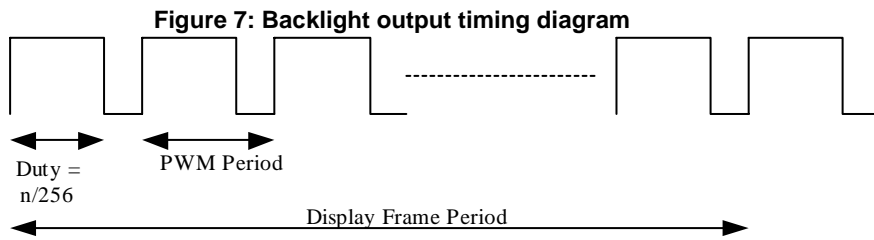
Figure 6: Piecewise-linear Gamma Function

6.3 Display Controller

The display controller block generates the necessary control signals for the CyberDisplay™ VGA display. The timing is derived from that of the external video source. Both NTSC and PAL video formats are supported. LED backlight timing is programmable to adjust color balance and uniformity by Pulse Width Modulation (PWM).

6.5 Backlight Controller

Backlight output is controlled by Pulse Width Modulation (PWM) controller. This duty cycle and clock period of backlight can be configured through the control register. The block diagram of the PWM Controller and the Backlight Output Timing Diagram are shown below.



The PWM Duty Cycle can be controlled I²C and 2 external input pins BK_UP and BK_DWN. The PWM controller will sample input pins of each frame to increase or decrease one duty cycle width.

6.6 Color Space Conversion

Color space conversion will be performed, depending on the input signals. In either case, the following conversions are required:

- RGB -> RGB Primary color signals on color display
- YCbCr -> RGB Luminance/Chrominance signals on color display.
- Y -> RGB Monochrome signal on color display
 RGB->Y->RGB Color signal converted to monochrome, and shown on color display

The controller contains YCbCr to RGB conversion and RGB to YCbCr conversion features. There are enable signals to on and off one or both features. In register 0x90, monochrome bit is used to output black and white picture. CSC_Mode bit is used to select one out of three conversion standards. There are also Y_offset, Cb_offset, Cr_offset in register 0x98, 0x99 and 0x9A for color space tuning.

If YCbCr to RGB enable bit is set, the conversion equations for different CSC_Mode bit setting are listed below.

CSC_Mode = 00 (SMTPE 170M)

$$R = Y + 1.40200 * (Cr-128)$$

$$G = Y - 0.34414 * (Cb-128) - 0.71414 * (Cr-128)$$

$$B = Y + 1.77200 * (Cb-128)$$

CSC_Mode = 01 (CCIR 601)

$$R = Y + 1.371 * (Cr - 128)$$

$$G = Y - 0.336 * (Cb - 128) - 0.698 * (Cr-128)$$

$$B = Y + 1.732 * (Cb-128)$$

CSC_Mode = 10 (BT601)

$$R = 1.164 * (Y - 16) + 1.596 * (Cr - 128)$$

$$G = 1.164 * (Y - 16) - 0.391 * (Cb - 128) - 0.813 * (Cr - 128)$$

$$B = 1.164 * (Y - 16) + 2.018 * (Cb - 128)$$

If RGB to YCbCr enable bit is set, the color space conversion equations become:

$$\text{CSC_Mode} = 00 \text{ (SMTPE 170M)}$$

$$Y = 0.29891 * R + 0.58661 * G + 0.11448 * B$$

$$Cb = -0.16874 * R - 0.33126 * G + 0.50000 * B$$

$$Cr = 0.50000 * R - 0.41869 * G - 0.08131 * B$$

$$\text{CSC_Mode} = 01 \text{ (CCIR 601)}$$

$$Y = 0.299 * R + 0.587 * G + 0.114 * B$$

$$Cb = -0.172 * R - 0.339 * G + 0.511 * B$$

$$Cr = 0.511 * R - 0.428 * G - 0.083 * B$$

$$\text{CSC_Mode} = 10 \text{ (BT601)}$$

$$Y = 0.257 * R + 0.504 * G + 0.098 * B + 16$$

$$Cb = -0.148 * R - 0.291 * G + 0.439 * B + 128$$

$$Cr = 0.439 * R - 0.368 * G - 0.071 * B + 128$$

6.7 Self-test Test Pattern Controller

The SSD1502 provides self-test patterns. The SSD1502 also includes a built-in video synchronization signal generator, so that it can display test patterns in the absence of an input video signal.

6.8 Stereo Video Support

The field stereo video interleave modes write alternate fields to the left and right eyes. Full resolution is preserved, but the frame rate is halved. This stereo video mode requires one more EN pin (EN2) to control another display panel. It supports both NTSC/PAL and VESA VGA input with external fields. The field is used field interleave to the left and right eyes. The circuit connection is as shown below. For example, if the image changes from white to black in each field alternately, the output image of the different panels would be white and black with the half frame rate only.

Figure 9: Field stereo video interleave output image

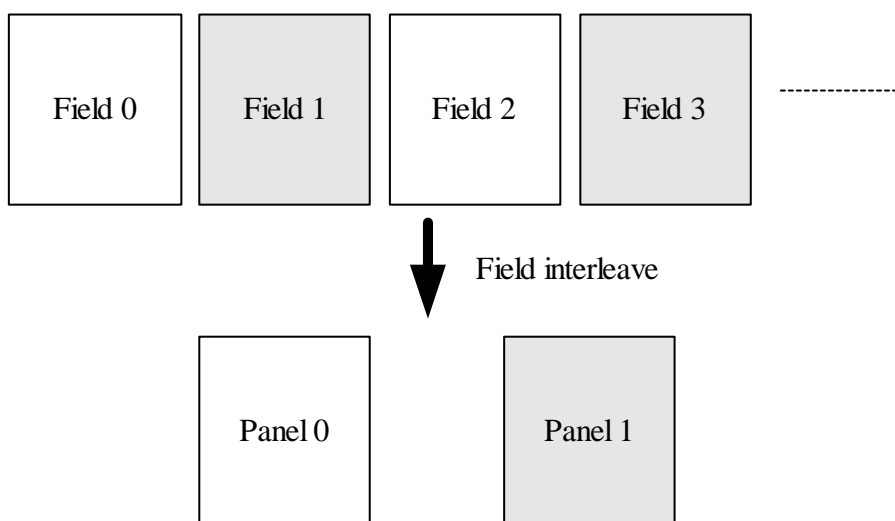
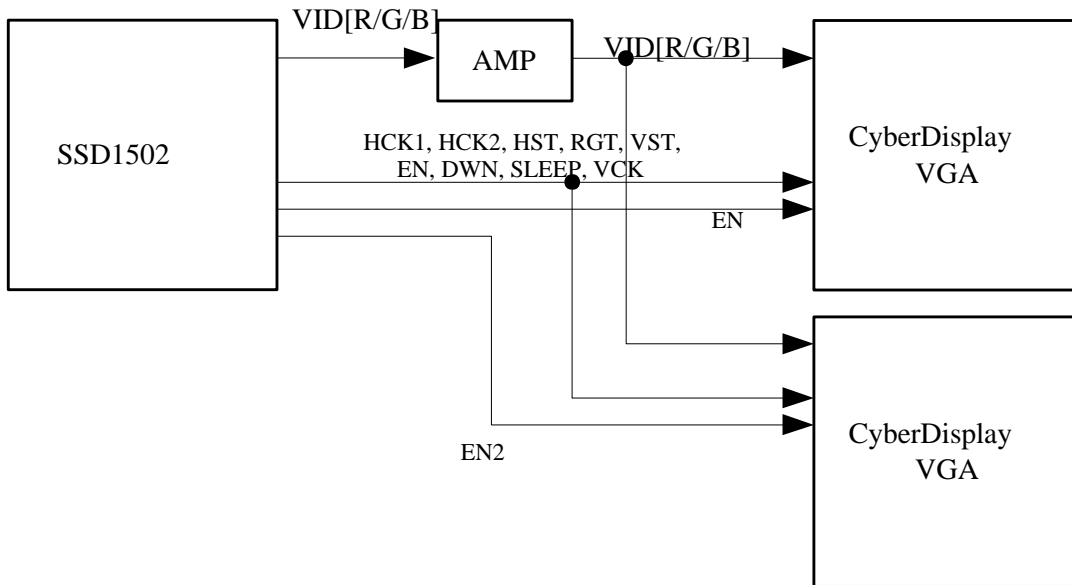


Figure 10: Progressive Input Control for Field Interleave Mode.



The line stereo video interleave mode updates both displays at the full frame rate, but cuts the vertical resolution in half. The different controllers will deinterlace in odd and even rows individually which is shown as below. Deinterlaced videos are written to the left- and right- eye displays are written individually. Because of the line interleave for each display, it can only support progressive input video signals. For example, if the rows are white and black alternately, the output of the stereo images will be white and black.

Figure 11: Line Stereo Video Interleave Output Image

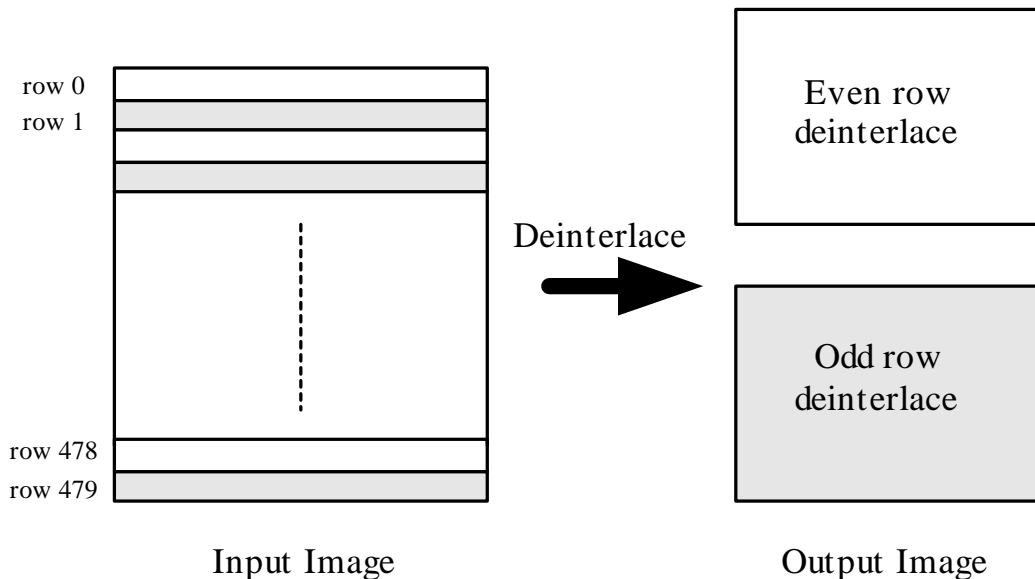
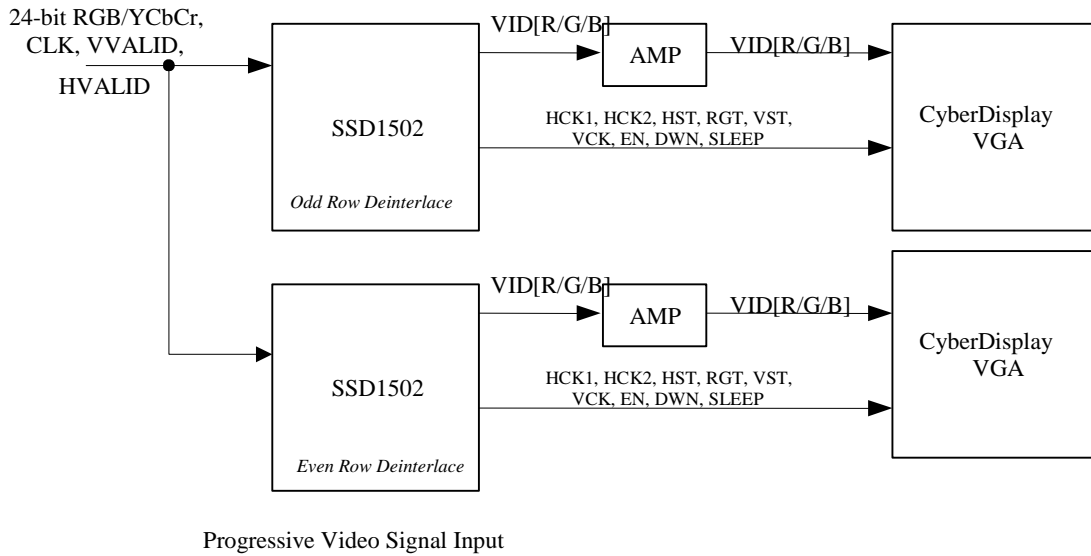


Figure 12: Progressive Input Control for Field Interleave Mode



6.9 Built-in Self-Test Memory

Embedded line memory will be tested by built-in test mode to achieve low cost and high test coverage.

6.10 I²C Interface

The I²C slave address is selectable. Pins SLA0 and SLA1 may select an alternate address (Table 4), if necessary to avoid conflicts with other devices.

Table 4: I²C Slave Address Selection

| SLA1 | SLA0 | Slave address (hex) |
|------|------|---------------------|
| 0 | 0 | 68 |
| 0 | 1 | 6A |
| 1 | 0 | 6C |
| 1 | 1 | 6E |

The SSD1502's I²C write and read formats are described below. Most writes take effect on the next vertical field, except for writes affecting video synchronization, which are effective immediately.

6.10.1 I²C Write Format

STA → SLA + Wb → ACK_S → REG_ADDR → ACK_S → DATAW1 → ACK_S → DATAW2 → → DATAW_n → STP

6.10.2 I²C Read Format

STA → SLA + Wb → ACK_S → REG_ADDR → ACK_S → Sr → SLA+R → DATAR1 → ACK_m → DATAR2 → → DATAR_n → ACK_m → STP

Or

STA → SLA + Wb → ACK_S → REG_ADDR → ACK_S → STP → STA → SLA+R → DATAR1 → ACK_m → DATAR2 → → DATAR_n → ACK_m → STP

Note:

STA : start condition
 ACK_S : acknowledge from slave
 SLA : slave address
 REG_ADDR : register address

Table 6: Signal Requirements for Various Decoders and Formats

| Signal name | PHILIPS SAA7111 8-bit CIRR601 | PHILIPS SAA7111 16-bit CIRR601 | PHILIPS SAA7113 8-bit CIRR656 |
|-------------|-------------------------------------|--------------------------------------|-------------------------------------|
| DV[8:15] | √ | √ | √ |
| DV[0:7] | L | √ | L |
| DV[16:23] | L | L | L |
| CKX2 | √ | √ | √ |
| CK | √ | √ | L |
| DVALID | H | H | H |
| FIELD | √ | √ | H |
| HVALID | √ | √ | H |
| VVALID | √ | √ | H |
| HS | √ | √ | H |
| VS | √ | √ | H |

Note : Data/signal requirements for SSD1502 to interface with PHILIPS SAA7111 and SAA7113 in different output data formats.

Remark:

DVALID is required to tie high.

Unused signal pins should be tied to known condition.

6.11.2 RGB/YCbCr 24-bit Input Signal with External Sync Signal

The input signal is required 24-bit input RGB/YCbCr signal and 3 timing signal to connect as the following Table 7. The decoder can generate the field signal for frame synchronization by VS signal.

Table 7: Signal requirement for RGB/YCbCr 24-bit input interface connection

| Signal name | VESA VGA |
|-------------|------------------|
| DV[0:23] | √ |
| CKX2 | L |
| CK | √ |
| DVALID/DE | √ |
| FIELD | √ ⁽¹⁾ |
| HVALID | H |
| VVALID | H |
| HS | √ |
| VS | √ |

⁽¹⁾ This pin is required for the field stereo mode only.

Remark: HVALID and VVALID are required to tie high.

6.11.3 Serial interface signal

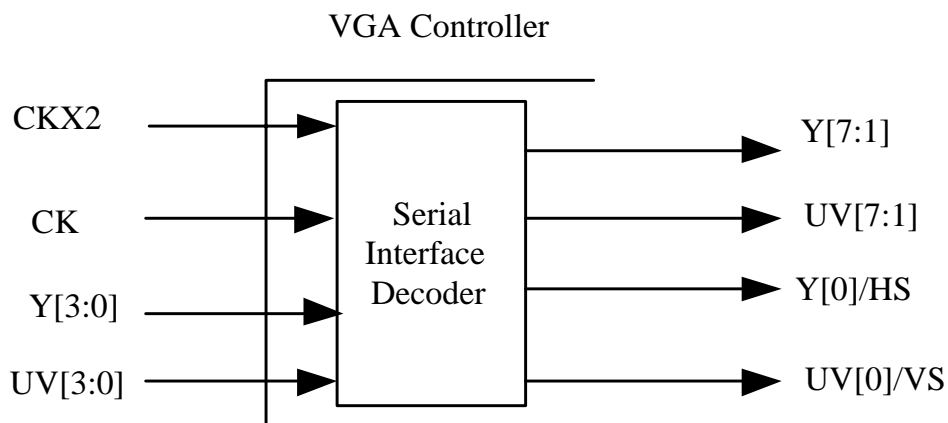


Figure 13: 10-wire serial interface

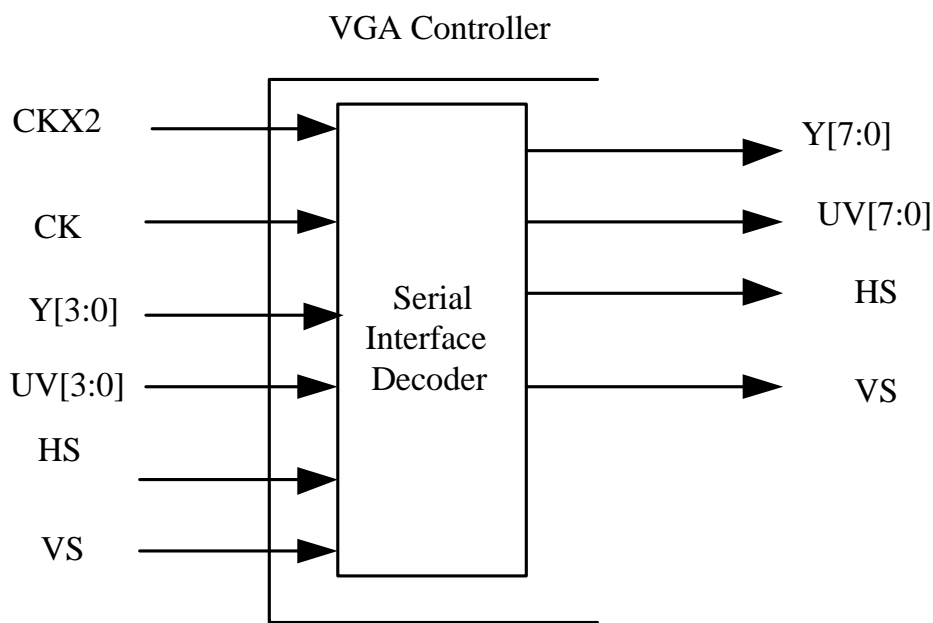


Figure 14: 12-wire serial interface

The different serial interface connections are shown as Figure 13 and Figure 14. This interface format is used for multiplexing the Y and UV component in the higher clock rate. The multiplexed signal will de-multiplex internal into CIRR601 YUV 422 format. For the 6/10-wire serial interface, the HS (VS) signal will be embedded into the LSB of 8-bit Y(UV) component (i.e. Y[0]/UV[0]). It will then be encoded into Y[0:1] (UV[0:1]) signal.

Table 8: Signal requirement for 10/12-wire serial interface format.

| Signal name | 10-wire | 12-wire |
|--------------------|----------------|----------------|
| Y[0] | √ | √ |
| Y[1] | √ | √ |
| Y[2] | √ | √ |
| Y[3] | √ | √ |
| UV[0] | √ | √ |
| UV[1] | √ | √ |
| UV[2] | √ | √ |
| UV[3] | √ | √ |
| CLKX2 | √ | √ |
| CLK | √ | √ |
| HS | H | √ |
| VS | H | √ |

Remark: DVALID, HVALID and VVALID are required to tie high.

6.12 Analog Circuits

6.12.1 D/A Converter

8-bit D/A full scale current can be controlled by external reference resistor R_E . The output maximum voltage V_{OUT} does not exceed 1V. Output current of DAC will be inverted in the line. For example, if one frame is driven with row 0 low, row 1 high, and row 2 low, then the following frame must have row 0 high, row 1 low, and row 2 high. The output inverse can support both dc and ac driving mode. The connection of the output signal and timing output of DAC is shown in the following figures.

Figure 15: DAC Output Connection for the external component

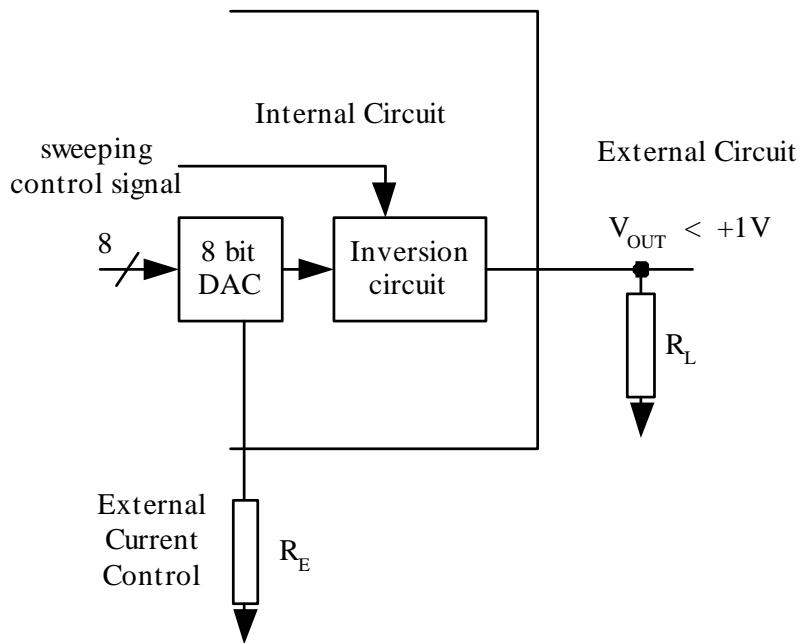


Figure 16: Output Voltage Level versus timing of DAC output in AC driving mode

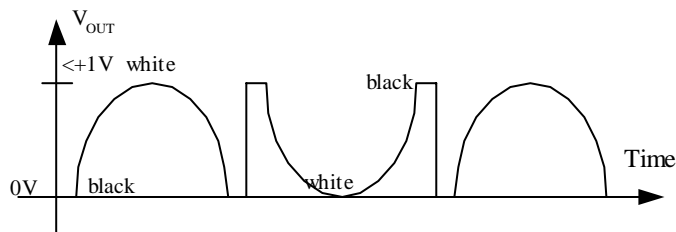
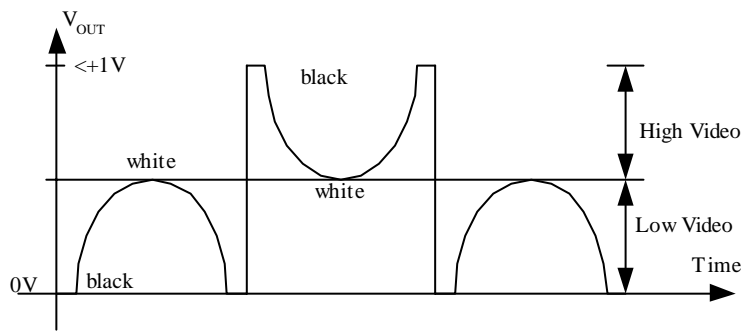


Figure 17: Output Voltage Level versus timing of DAC output in DC driving mode



6.12.2 Power Down Control

D/A can be power down by control register.

6.12.3 External Capacitors

External 0.1uF capacitors are required in COMP1 and REFIO pin.

7 Internal Register Description

Table 9 – Internal Register Table

| Address | Function | Note |
|-------------|--|---------|
| 0X00 ~ 0X3F | Global and TG Control Register | 64bytes |
| 0X40 ~ 0X7F | Buffer Control Register | 64bytes |
| 0X80 ~ 0XBF | DSP Control Register / DV Display Register | 64bytes |
| 0XC0 ~ 0XFF | Digital Video Interface Control Register | 64bytes |

7.1 Global and TG Control Register

| | | REG[01h] | | | | | | | |
|-------------|--|-------------------|---------------------|----|---------------|----|----|----|----|
| Bit | | 7 | 6 | 5 | 4 | 3 | 2 | 1 | 0 |
| | | PWMCLK Force High | PWNCLK Duty Control | 0 | PWMCLK enable | 0 | 0 | 0 | 0 |
| Type | | RW | RW | NA | RW | NA | NA | NA | NA |
| Reset state | | 0 | 0 | 0 | 1 | 0 | 0 | 0 | 0 |

Bit 7: PWMCLK Force High
When this bit = 1, RGB_BK pin output high
When this bit = 0, RGB_BK pin output will be controlled PWM module

Bit 6: PWMCLK DUTY Control
When this bit = 1, PWMCLK duty cycle will controlled by external pin BK_UP and BK_DOWN. BK_UP will increase the high period in RGB_BK output, BK_DOWN versus vice.

Bit 4: PWMCLK enable
When this bit = 1, PWMCLK is enabled in PWM module
When this bit = 0, PWMCLK is disabled in PWM module

| | | REG[02h] | | | | | | | |
|-------------|--|--------------------------------|--------------------------------|--------------------------------|--------------------------------|----|----|----|----|
| Bit | | 7 | 6 | 5 | 4 | 3 | 2 | 1 | 0 |
| | | PWMCLK Source Divide Selection | PWMCLK Source Divide Selection | PWMCLK Source Divide Selection | PWMCLK Source Divide Selection | 0 | 0 | 0 | 0 |
| Type | | RW | RW | RW | RW | NA | NA | NA | NA |
| Reset state | | 0 | 0 | 0 | 0 | 0 | 0 | 0 | 0 |

Bit 7-4 : PWMCLK source Divide Selection
This register is used for control the clock source of PWM module.

| | |
|-----------|--------------------|
| 4'b0000 | clk |
| 4'b0001 | clk divide by 2 |
| 4'b0010 | clk divide by 4 |
| 4'b0011 | clk divide by 8 |
| 4'b0100 | clk divide by 16 |
| 4'b0101 | clk divide by 32 |
| 4'b0110 | clk divide by 64 |
| 4'b0111 | clk divide by 128 |
| 4'b1000 | clk divide by 256 |
| 4'b1001 | clk divide by 512 |
| 4'b1010 | clk divide by 1024 |
| 4'b1011 | clk divide by 2048 |
| Otherwise | clk divide by 2048 |

REG[03h]

| | | | | | | | | |
|-------------|--------------------------------|--------------------------------|--------------------------------|--------------------------------|--------------------------------|--------------------------------|--------------------------------|--------------------------------|
| Bit | 7 | 6 | 5 | 4 | 3 | 2 | 1 | 0 |
| | PWM clock duty cycle selection | PWM clock duty cycle selection | PWM clock duty cycle selection | PWM clock duty cycle selection | PWM clock duty cycle selection | PWM clock duty cycle selection | PWM clock duty cycle selection | PWM clock duty cycle selection |
| Type | RW | RW | RW | RW | RW | RW | RW | RW |
| Reset state | 1 | 0 | 0 | 0 | 0 | 0 | 0 | 0 |

Bit 7-0:

PWM clock duty cycle selection

This register is used for control duty cycle of RBG_BK pin PWM output

| | |
|-------|--------------------|
| 8'h00 | 0 high and 256 low |
| 8'h01 | 1 high and 255 low |
| 8'h02 | 2 high and 254 low |
| | |
| 8'hFF | 255 high and 1 low |

REG[04h]

| | | | | | | | | |
|-------------|---------------------------|---------------------------|---------------------------|---------------------------|---------------------------|---------------------------|---------------------------|---------------------------|
| Bit | 7 | 6 | 5 | 4 | 3 | 2 | 1 | 0 |
| | VCOM sweep position Bit 7 | VCOM sweep position Bit 6 | VCOM sweep position Bit 5 | VCOM sweep position Bit 4 | VCOM sweep position Bit 3 | VCOM sweep position Bit 2 | VCOM sweep position Bit 1 | VCOM sweep position Bit 0 |
| Type | RW | RW | RW | RW | RW | RW | RW | RW |
| Reset state | 0 | 0 | 0 | 0 | 0 | 0 | 0 | 0 |

REG[05h]

| | | | | | | | | |
|-------------|----|----|----|----|----|----|---------------------------|---------------------------|
| Bit | 7 | 6 | 5 | 4 | 3 | 2 | 1 | 0 |
| | 0 | 0 | 0 | 0 | 0 | 0 | VCOM sweep position Bit 9 | VCOM sweep position Bit 8 |
| Type | NA | NA | NA | NA | NA | NA | RW | RW |
| Reset state | 0 | 0 | 0 | 0 | 0 | 0 | 0 | 0 |

Bits 9-0:

VCOM sweep position

This register is used for control the VCOM signal sweep position. It is only work when REG[1F] bit 4 = 0.

REG[06h]

| | | | | | | | | |
|-------------|---------------------------|---------------------------|---------------------------|---------------------------|---------------------------|---------------------------|---------------------------|---------------------------|
| Bit | 7 | 6 | 5 | 4 | 3 | 2 | 1 | 0 |
| | Data Fetch Position Bit 7 | Data Fetch Position Bit 6 | Data Fetch Position Bit 5 | Data Fetch Position Bit 4 | Data Fetch Position Bit 3 | Data Fetch Position Bit 2 | Data Fetch Position Bit 1 | Data Fetch Position Bit 0 |
| Type | RW | RW | RW | RW | RW | RW | RW | RW |
| Reset state | 0 | 0 | 1 | 1 | 0 | 1 | 1 | 0 |

REG[07h]

| | | | | | | | | |
|-------------|----|----|----|----|----|----|---------------------------|---------------------------|
| Bit | 7 | 6 | 5 | 4 | 3 | 2 | 1 | 0 |
| | 0 | 0 | 0 | 0 | 0 | 0 | Data Fetch Position Bit 9 | Data Fetch Position Bit 8 |
| Type | NA | NA | NA | NA | NA | NA | RW | RW |
| Reset state | 0 | 0 | 0 | 0 | 0 | 0 | 0 | 0 |

Bits 9-0:

Data Fetch Position

This register is used to control data fetch timing from the memory line buffer. This register setting will affect the data output position to the display panel.

REG[08h]

| Bit | 7 | 6 | 5 | 4 | 3 | 2 | 1 | 0 |
|-------------|--------------------------------|--------------------------------|--------------------------------|--------------------------------|--------------------------------|--------------------------------|--------------------------------|--------------------------------|
| | VST Rising Edge Position Bit 7 | VST Rising Edge Position Bit 6 | VST Rising Edge Position Bit 5 | VST Rising Edge Position Bit 4 | VST Rising Edge Position Bit 3 | VST Rising Edge Position Bit 2 | VST Rising Edge Position Bit 1 | VST Rising Edge Position Bit 0 |
| Type | RW | RW | RW | RW | RW | RW | RW | RW |
| Reset state | 0 | 0 | 1 | 1 | 0 | 0 | 1 | 0 |

REG[09h]

| Bit | 7 | 6 | 5 | 4 | 3 | 2 | 1 | 0 |
|-------------|----|----|----|----|----|----|--------------------------------|--------------------------------|
| | 0 | 0 | 0 | 0 | 0 | 0 | VST Rising Edge Position Bit 9 | VST Rising Edge Position Bit 8 |
| Type | NA | NA | NA | NA | NA | NA | RW | RW |
| Reset state | 0 | 0 | 0 | 0 | 0 | 0 | 0 | 0 |

Bits 9-0:

VST Rising Edge Position

This register is for setting VST rising edge position.

REG[0Ah]

| | | | | | | | | |
|-------------|---------------------------------|---------------------------------|---------------------------------|---------------------------------|---------------------------------|---------------------------------|---------------------------------|---------------------------------|
| Bit | 7 | 6 | 5 | 4 | 3 | 2 | 1 | 0 |
| | VST Falling Edge Position Bit 7 | VST Falling Edge Position Bit 6 | VST Falling Edge Position Bit 5 | VST Falling Edge Position Bit 4 | VST Falling Edge Position Bit 3 | VST Falling Edge Position Bit 2 | VST Falling Edge Position Bit 1 | VST Falling Edge Position Bit 0 |
| Type | RW | RW | RW | RW | RW | RW | RW | RW |
| Reset state | 0 | 1 | 0 | 0 | 0 | 1 | 1 | 0 |

REG[0Bh]

| | | | | | | | | |
|-------------|----|----|----|----|----|----|---------------------------------|---------------------------------|
| Bit | 7 | 6 | 5 | 4 | 3 | 2 | 1 | 0 |
| | 0 | 0 | 0 | 0 | 0 | 0 | VST Falling Edge Position Bit 9 | VST Falling Edge Position Bit 8 |
| Type | NA | NA | NA | NA | NA | NA | RW | RW |
| Reset state | 0 | 0 | 0 | 0 | 0 | 0 | 0 | 0 |

Bits 9-0:

VST Falling Edge Position

This register is for setting VST falling edge position.

REG[0Ch]

| | | | | | | | | |
|-------------|--------------------------------|--------------------------------|--------------------------------|--------------------------------|--------------------------------|--------------------------------|--------------------------------|--------------------------------|
| Bit | 7 | 6 | 5 | 4 | 3 | 2 | 1 | 0 |
| | VCK Rising Edge Position Bit 7 | VCK Rising Edge Position Bit 6 | VCK Rising Edge Position Bit 5 | VCK Rising Edge Position Bit 4 | VCK Rising Edge Position Bit 3 | VCK Rising Edge Position Bit 2 | VCK Rising Edge Position Bit 1 | VCK Rising Edge Position Bit 0 |
| Type | RW | RW | RW | RW | RW | RW | RW | RW |
| Reset state | 0 | 0 | 1 | 0 | 0 | 0 | 0 | 0 |

REG[0Dh]

| | | | | | | | | |
|-------------|----|----|----|----|----|----|--------------------------------|--------------------------------|
| Bit | 7 | 6 | 5 | 4 | 3 | 2 | 1 | 0 |
| | 0 | 0 | 0 | 0 | 0 | 0 | VCK Rising Edge Position Bit 9 | VCK Rising Edge Position Bit 8 |
| Type | NA | NA | NA | NA | NA | NA | RW | RW |
| Reset state | 0 | 0 | 0 | 0 | 0 | 0 | 0 | 0 |

Bits 9-0:

VCK Rising Edge Position

This register is for setting VCK rising edge position.

REG[0Eh]

| | | | | | | | | |
|-------------|---------------------------------|---------------------------------|---------------------------------|---------------------------------|---------------------------------|---------------------------------|---------------------------------|---------------------------------|
| Bit | 7 | 6 | 5 | 4 | 3 | 2 | 1 | 0 |
| | VCK Falling Edge Position Bit 7 | VCK Falling Edge Position Bit 6 | VCK Falling Edge Position Bit 5 | VCK Falling Edge Position Bit 4 | VCK Falling Edge Position Bit 3 | VCK Falling Edge Position Bit 2 | VCK Falling Edge Position Bit 1 | VCK Falling Edge Position Bit 0 |
| Type | RW | RW | RW | RW | RW | RW | RW | RW |
| Reset state | 0 | 0 | 1 | 0 | 0 | 1 | 0 | 0 |

REG[0Fh]

| | | | | | | | | |
|-------------|----|----|----|----|----|----|---------------------------------|---------------------------------|
| Bit | 7 | 6 | 5 | 4 | 3 | 2 | 1 | 0 |
| | 0 | 0 | 0 | 0 | 0 | 0 | VCK Falling Edge Position Bit 9 | VCK Falling Edge Position Bit 8 |
| Type | NA | NA | NA | NA | NA | NA | RW | RW |
| Reset state | 0 | 0 | 0 | 0 | 0 | 0 | 0 | 0 |

Bits 9-0: **VCK Falling Edge Position**
 This register is for setting VCK falling edge position.

REG[10h]

| | | | | | | | | |
|-------------|--------------------------------|--------------------------------|--------------------------------|--------------------------------|--------------------------------|--------------------------------|--------------------------------|--------------------------------|
| Bit | 7 | 6 | 5 | 4 | 3 | 2 | 1 | 0 |
| | HST Rising Edge Position Bit 7 | HST Rising Edge Position Bit 6 | HST Rising Edge Position Bit 5 | HST Rising Edge Position Bit 4 | HST Rising Edge Position Bit 3 | HST Rising Edge Position Bit 2 | HST Rising Edge Position Bit 1 | HST Rising Edge Position Bit 0 |
| Type | RW | RW | RW | RW | RW | RW | RW | RW |
| Reset state | 0 | 0 | 1 | 1 | 0 | 1 | 0 | 1 |

REG[11h]

| | | | | | | | | |
|-------------|----|----|----|----|----|----|--------------------------------|--------------------------------|
| Bit | 7 | 6 | 5 | 4 | 3 | 2 | 1 | 0 |
| | 0 | 0 | 0 | 0 | 0 | 0 | HST Rising Edge Position Bit 9 | HST Rising Edge Position Bit 8 |
| Type | NA | NA | NA | NA | NA | NA | RW | RW |
| Reset state | 0 | 0 | 0 | 0 | 0 | 0 | 0 | 0 |

Bits 9-0: **HST Rising Edge Position**
 This register is for setting HST rising edge position.

REG[12h]

| | | | | | | | | |
|-------------|------------------------------------|------------------------------------|------------------------------------|------------------------------------|------------------------------------|------------------------------------|------------------------------------|------------------------------------|
| Bit | 7 | 6 | 5 | 4 | 3 | 2 | 1 | 0 |
| | HST Falling Edge Position Bit 7 | HST Falling Edge Position Bit 6 | HST Falling Edge Position Bit 5 | HST Falling Edge Position Bit 4 | HST Falling Edge Position Bit 3 | HST Falling Edge Position Bit 2 | HST Falling Edge Position Bit 1 | HST Falling Edge Position Bit 0 |
| Type | RW | RW | RW | RW | RW | RW | RW | RW |
| Reset state | 0 | 0 | 1 | 1 | 0 | 1 | 1 | 1 |

REG[13h]

| | | | | | | | | |
|-------------|----|----|----|----|----|----|------------------------------------|------------------------------------|
| Bit | 7 | 6 | 5 | 4 | 3 | 2 | 1 | 0 |
| | 0 | 0 | 0 | 0 | 0 | 0 | HST Falling Edge Position Bit 9 | HST Falling Edge Position Bit 8 |
| Type | NA | NA | NA | NA | NA | NA | RW | RW |
| Reset state | 0 | 0 | 0 | 0 | 0 | 0 | 0 | 0 |

Bits 9-0: HST Falling Edge Position
This register is for setting HST falling edge position.

REG[14h]

| | | | | | | | | |
|-------------|----------------------------------|----------------------------------|----------------------------------|----------------------------------|----------------------------------|----------------------------------|----------------------------------|----------------------------------|
| Bit | 7 | 6 | 5 | 4 | 3 | 2 | 1 | 0 |
| | EN Rising Edge Position Bit 7 | EN Rising Edge Position Bit 6 | EN Rising Edge Position Bit 5 | EN Rising Edge Position Bit 4 | EN Rising Edge Position Bit 3 | EN Rising Edge Position Bit 2 | EN Rising Edge Position Bit 1 | EN Rising Edge Position Bit 0 |
| Type | RW | RW | RW | RW | RW | RW | RW | RW |
| Reset state | 0 | 0 | 1 | 0 | 1 | 1 | 0 | 0 |

REG[15h]

| | | | | | | | | |
|-------------|----|----|----|----|----|----|----------------------------------|----------------------------------|
| Bit | 7 | 6 | 5 | 4 | 3 | 2 | 1 | 0 |
| | 0 | 0 | 0 | 0 | 0 | 0 | EN Rising Edge Position Bit 9 | EN Rising Edge Position Bit 8 |
| Type | NA | NA | NA | NA | NA | NA | RW | RW |
| Reset state | 0 | 0 | 0 | 0 | 0 | 0 | 0 | 0 |

Bits 9-0: EN Rising Edge Position
This register is for setting EN rising edge position.

REG[16h]

| | | | | | | | | |
|-------------|-----------------------------------|-----------------------------------|-----------------------------------|-----------------------------------|-----------------------------------|-----------------------------------|-----------------------------------|-----------------------------------|
| Bit | 7 | 6 | 5 | 4 | 3 | 2 | 1 | 0 |
| | EN Falling Edge Position Bit 7 | EN Falling Edge Position Bit 6 | EN Falling Edge Position Bit 5 | EN Falling Edge Position Bit 4 | EN Falling Edge Position Bit 3 | EN Falling Edge Position Bit 2 | EN Falling Edge Position Bit 1 | EN Falling Edge Position Bit 0 |
| Type | RW | RW | RW | RW | RW | RW | RW | RW |
| Reset state | 1 | 1 | 1 | 1 | 0 | 0 | 0 | 0 |

REG[17h]

| | | | | | | | | |
|-------------|----|----|----|----|----|----|-----------------------------------|-----------------------------------|
| Bit | 7 | 6 | 5 | 4 | 3 | 2 | 1 | 0 |
| | 0 | 0 | 0 | 0 | 0 | 0 | EN Falling Edge Position Bit 9 | EN Falling Edge Position Bit 8 |
| Type | NA | NA | NA | NA | NA | NA | RW | RW |
| Reset state | 0 | 0 | 0 | 0 | 0 | 0 | 1 | 0 |

Bits 9-0:

EN Falling Edge Position

This register is for setting EN falling edge position.

REG[18h]

| | | | | | | | | |
|-------------|--------------------------------------|--------------------------------------|--------------------------------------|--------------------------------------|--------------------------------------|--------------------------------------|--------------------------------------|--------------------------------------|
| Bit | 7 | 6 | 5 | 4 | 3 | 2 | 1 | 0 |
| | Second New Line Start Position Bit 7 | Second New Line Start Position Bit 6 | Second New Line Start Position Bit 5 | Second New Line Start Position Bit 4 | Second New Line Start Position Bit 3 | Second New Line Start Position Bit 2 | Second New Line Start Position Bit 1 | Second New Line Start Position Bit 0 |
| Type | RW | RW | RW | RW | RW | RW | RW | RW |
| Reset state | 0 | 1 | 0 | 1 | 0 | 0 | 0 | 0 |

REG[19h]

| | | | | | | | | |
|-------------|----|----|----|----|----|----|--------------------------------------|--------------------------------------|
| Bit | 7 | 6 | 5 | 4 | 3 | 2 | 1 | 0 |
| | 0 | 0 | 0 | 0 | 0 | 0 | Second New Line Start Position Bit 9 | Second New Line Start Position Bit 8 |
| Type | NA | NA | NA | NA | NA | NA | RW | RW |
| Reset state | 0 | 0 | 0 | 0 | 0 | 0 | 1 | 1 |

Bits 9-0:

New Second Line Start Position

This register is only used for the generation of the new second new line start position to the panel in the interlace video source. This position helps for generating the output timing control signals.

REG[1Ah]

| | | | | | | | | |
|-------------|--------------------------|--------------------------|--------------------------|--------------------------|--------------------------|--------------------------|--------------------------|--------------------------|
| Bit | 7 | 6 | 5 | 4 | 3 | 2 | 1 | 0 |
| | New Frame Position Bit 7 | New Frame Position Bit 6 | New Frame Position Bit 5 | New Frame Position Bit 4 | New Frame Position Bit 3 | New Frame Position Bit 2 | New Frame Position Bit 1 | New Frame Position Bit 0 |
| Type | RW | RW | RW | RW | RW | RW | RW | RW |
| Reset state | 0 | 0 | 0 | 0 | 0 | 0 | 1 | 0 |

REG[1Bh]

| | | | | | | | | |
|-------------|----|----|----|----|----|----|--------------------------|--------------------------|
| Bit | 7 | 6 | 5 | 4 | 3 | 2 | 1 | 0 |
| | 0 | 0 | 0 | 0 | 0 | 0 | New Frame Position Bit 9 | New Frame Position Bit 8 |
| Type | NA | NA | NA | NA | NA | NA | RW | RW |
| Reset state | 0 | 0 | 0 | 0 | 0 | 0 | 0 | 0 |

Bits 9-0:

New Frame Position

This register is for setting the new frame position after Vsync signal which go to a non valid data interval. This register only function when REG[C0] bit 7 = 1.

REG[1Ch]

| | | | | | | | | |
|-------------|----|---------------|-------------|-------------|--------------------|---------------------------|---------------|-----------------------|
| Bit | 7 | 6 | 5 | 4 | 3 | 2 | 1 | 0 |
| | 0 | SLEEP Control | RGT Control | DWN Control | Power Down Control | Disable VCOM Frame Change | VCOM Polarity | Disable Internal VCOM |
| Type | NA | RW | RW | RW | RW | RW | RW | RW |
| Reset state | 0 | 0 | 1 | 1 | 0 | 0 | 0 | 0 |

Bit 6:

SLEEP Control

This bit is for display panel control.
When this bit = 1, SLEEP pin will drive high.
When this bit = 0, SLEEP pin will drive low.

Bit 5:

RGT Control

This bit is for display panel control.
When this bit = 1, RGT pin will drive high.
When this bit = 0, RGT pin will drive low.

Bit 4:

DWN Control

This bit is for display panel control.
When this bit = 1, DWN pin will drive high.
When this bit = 0, DWN pin will drive low.

Bit 3:

Power Down Control

When this bit = 1, power down will be activated.
When this bit = 0, normal.

Bit 2:

Disable VCOM Frame Change

When this bit = 1, VCOM does not sweep after in each new frame.
When this bit = 0, VCOM sweeps after in each new frame. (Normal mode)

Bit 1:

VCOM polarity

This bit is for controlling video signal sweeping vs VCOM polarity.
When this bit = 1, internal VCOM high for sweeping output video signal.
When this bit = 0, internal VCOM low for sweeping output video signal.

Bit 0:

Disable internal VCOM change

When this bit = 1, internal VCOM does not sweep at each new line
When this bit = 0, internal VCOM sweeps when line change. (Normal mode)

REG[1Dh]

| Bit | 7 | 6 | 5 | 4 | 3 | 2 | 1 | 0 |
|-------------|----|-----------|--------------------|--------------------|---------|---------|------------------|------------------|
| | 0 | INV CLKX2 | SKEW Control CLKX2 | SKEW Control CLKX2 | SRC CLK | INV CLK | SKEW Control CLK | SKEW Control CLK |
| Type | NA | RW | RW | RW | RW | RW | RW | RW |
| Reset state | 0 | 0 | 0 | 0 | 0 | 0 | 0 | 0 |

- Bit 6:** INV CLKX2
This bit is for controlling the inversion of CLKX2
When this bit = 1, the inversion of CLKX2 is enabled.
When this bit = 0, Normal.
- Bits 5-4:** SKEW Control CLKX2
This bit is for phase adjustment
2'b00: No phase delay
2'b01-2'b11: Approximately 2ns per step
- Bit 3:** SRC CLK
This bit is for CLK source selection
When this bit = 1, source of CLK is generated by CLKX2 signal.
When this bit = 0, source of CLK is external input pin CLK.
- Bit 2:** INV CLK
This bit is for controlling the inversion of CLK
When this bit = 1, the inversion of CLK is enabled.
When this bit = 0, Normal.
- Bits 1-0:** SKEW Control CLK
This bit is for phase adjustment
2'b00: No phase delay
2'b01-2'b11: Approximately 2ns per step

REG[1Eh]

| Bit | 7 | 6 | 5 | 4 | 3 | 2 | 1 | 0 |
|-------------|----|----|----|--------------|-------------------|---------|-------------------|-------------------|
| | 0 | 0 | 0 | HCLK Control | Disable Gate HCLK | INV CLK | SKEW Control HCLK | SKEW Control HCLK |
| Type | NA | NA | NA | RW | RW | RW | RW | RW |
| Reset state | 0 | 0 | 0 | 1 | 1 | 0 | 0 | 0 |

- Bit 4:** HCLK Control
This bit is for controlling sync of HCLK in each line.
When this bit = 1, without synchronization.
When this bit = 0, normal.
- Bit 3:** Disable Gate HCLK
This bit is for gating of the HCLK signal when EN is low.
When this bit = 1, disable the gating of HCLK.
When this bit = 0, normal.
- Bit 2:** INV HCLK
This bit is for controlling the inversion of HCLK
When this bit = 1, the inversion of HCLK is enabled.
When this bit = 0, normal.
- Bits 1-0:** SKEW Control HCLK
This bit is for phase adjustment
2'b00: No phase delay
2'b01-2'b11: Approximately 2ns per step

REG[1Fh]

| Bit | 7 | 6 | 5 | 4 | 3 | 2 | 1 | 0 |
|-------------|----------|----------|-----------|------------------|---------------|---------------|---------------|---------------|
| | DAC PWDA | DAC PWDD | DAC REFIO | DAC Mode Control | DAC DC tuning | DAC DC tuning | DAC DC tuning | DAC DC tuning |
| Type | RW | RW | RW | RW | RW | RW | RW | RW |
| Reset state | 0 | 0 | 1 | 0 | 0 | 0 | 0 | 0 |

- Bit 7: DAC PWDA
This bit is for controlling power down analog part of DAC
When this bit = 1, power down the analog part of DAC.
When this bit = 0, normal.
- Bit 6: DAC PWDD
This bit is for controlling power down digital part of DAC
When this bit = 1, power down the digital part of DAC.
When this bit = 0, normal.
- Bit 5: Bandgap Voltage Control
This bit is for controlling source of voltage reference
When this bit = 1, select the internal bandgap voltage reference.
When this bit = 0, select the external voltage reference by REFIO pin.
- Bit 4: DAC Mode Control
This bit is for controlling VCOM driving mode.
When this bit = 1, VCOM DC driving mode will be activated.
When this bit = 0, VCOM AC driving mode will be activated.
- Bits 3-0: DAC DC tuning
These bits are for controlling DAC offset level in the VCOM DC mode.

REG[20h]

| Bit | 7 | 6 | 5 | 4 | 3 | 2 | 1 | 0 |
|-------------|----|----|---------------------|---------------------|---------------------|---------------------|---------------------|---------------------|
| | 0 | 0 | Test Probe0 Control | Test Probe0 Control | Test Probe0 Control | Test Probe0 Control | Test Probe0 Control | Test Probe0 Control |
| Type | NA | NA | RW | RW | RW | RW | RW | RW |
| Reset state | 0 | 0 | 0 | 0 | 0 | 0 | 0 | 0 |

- Bits 5-0: Test Probe0 Control
This register is for internal test only.

REG[21h]

| Bit | 7 | 6 | 5 | 4 | 3 | 2 | 1 | 0 |
|-------------|----|----|---------------------|---------------------|---------------------|---------------------|---------------------|---------------------|
| | 0 | 0 | Test Probe1 Control | Test Probe1 Control | Test Probe1 Control | Test Probe1 Control | Test Probe1 Control | Test Probe1 Control |
| Type | NA | NA | RW | RW | RW | RW | RW | RW |
| Reset state | 0 | 0 | 0 | 0 | 0 | 0 | 0 | 0 |

- Bits 5-0: Test Probe1 Control
This register is for internal test only.

7.2 Buffer Control Register

REG[40h]

| | | | | | | | | |
|-------------|---------------|--------------------|--------------------|--------------------|----|-----------------|------------|------------|
| Bit | 7 | 6 | 5 | 4 | 3 | 2 | 1 | 0 |
| | TestPN enable | TestPN MUX Control | TestPN MUX Control | TestPN MUX Control | 0 | TestPN Frontend | Color Mode | Color Mode |
| Type | RW | RW | RW | RW | NA | RW | RW | RW |
| Reset state | 0 | 0 | 0 | 0 | 0 | 0 | 0 | 0 |

- Bit 7: TestPN enable
This register is for controlling the internal test pattern generation. When this bit = 1, embedded test pattern will be generated. When this bit = 0, normal
- Bits 6-4: TestPN MUX Control
This register is the option control for different type of test pattern.
- Bit 2: TestPN Frontend
This register is for internal test only. It **MUST be** kept at 0 in normal operation.
- Bits 1-0: Color Mode
This register is for selection of embedded test pattern when TestPN enable is equal to 1.

| Option | Pattern Type |
|--------|--------------|
| 00 | Color bar |
| 01 | Checkbox |
| 10 | Gradient Up |
| 11 | Crosshatch |

REG[41h]

| | | | | | | | | |
|-------------|----|----|---------------------|---------------------|-----------------------|-------------------|--------------------|---------------|
| Bit | 7 | 6 | 5 | 4 | 3 | 2 | 1 | 0 |
| | 0 | 0 | Stereo Mode Control | Stereo Mode Control | Median Filter Control | VCOM Flip Control | Deinterlace Enable | Internal Test |
| Type | NA | NA | RW | RW | RW | RW | RW | RW |
| Reset state | 0 | 0 | 0 | 0 | 0 | 0 | 0 | 0 |

- Bits 5-4: Stereo Mode Control
This register is for controlling different Video Stereo Modes.
- | Option | Type |
|--------|--------------------|
| 00, 01 | Normal Operation |
| 10 | Field Video Stereo |
| 11 | Line Video Stereo |
- Bit 3: Median Filter Control
This bit is for selection of different deinterlace mode. When this bit = 1, median filter option is selected for deinterlacing. When this bit = 0, line double option is selected for deinterlacing.
- Bit 2: VCOM Flip Control
This bit is for controlling VCOM Flipping versus new frame signal. It is mainly used for Field Stereo mode to provide an appropriate VCOM flipping to display panel. When this bit = 1, VCOM will flip per two new frame signal pulse. When this bit = 0, VCOM will flip per each new frame signal pulse.
- Bit 1: Deinterlace Enable
This bit is for controlling the deinterlace option. When this bit = 1, deinterlace is activated. When this bit = 0, deinterlace is deactivated.
- Bit 0: Internal Test
This register is for internal test only. It **MUST** keep 0 in normal operation.

7.3 DV Display Register

REG[70h]

| | | | | | | | | |
|-------------|--------------------------------------|--------------------------------------|--------------------------------------|--------------------------------------|--------------------------------------|--------------------------------------|--------------------------------------|--------------------------------------|
| Bit | 7 | 6 | 5 | 4 | 3 | 2 | 1 | 0 |
| | Horizontal Crop Start Position Bit 7 | Horizontal Crop Start Position Bit 6 | Horizontal Crop Start Position Bit 5 | Horizontal Crop Start Position Bit 4 | Horizontal Crop Start Position Bit 3 | Horizontal Crop Start Position Bit 2 | Horizontal Crop Start Position Bit 1 | Horizontal Crop Start Position Bit 0 |
| Type | RW | RW | RW | RW | RW | RW | RW | RW |
| Reset state | 0 | 0 | 0 | 0 | 0 | 0 | 0 | 0 |

REG[71h]

| | | | | | | | | |
|-------------|----|----|----|----|----|----|--------------------------------------|--------------------------------------|
| Bit | 7 | 6 | 5 | 4 | 3 | 2 | 1 | 0 |
| | 0 | 0 | 0 | 0 | 0 | 0 | Horizontal Crop Start Position Bit 9 | Horizontal Crop Start Position Bit 8 |
| Type | NA | NA | NA | NA | NA | NA | RW | RW |
| Reset state | 0 | 0 | 0 | 0 | 0 | 0 | 0 | 0 |

Bits 9-0:

Horizontal Crop Start Position
The register is for controlling Horizontal Crop Start Position

REG[72h]

| | | | | | | | | |
|-------------|------------------------------------|------------------------------------|------------------------------------|------------------------------------|------------------------------------|------------------------------------|------------------------------------|------------------------------------|
| Bit | 7 | 6 | 5 | 4 | 3 | 2 | 1 | 0 |
| | Horizontal Crop End Position Bit 7 | Horizontal Crop End Position Bit 6 | Horizontal Crop End Position Bit 5 | Horizontal Crop End Position Bit 4 | Horizontal Crop End Position Bit 3 | Horizontal Crop End Position Bit 2 | Horizontal Crop End Position Bit 1 | Horizontal Crop End Position Bit 0 |
| Type | RW | RW | RW | RW | RW | RW | RW | RW |
| Reset state | 0 | 1 | 1 | 1 | 1 | 1 | 1 | 1 |

REG[73h]

| | | | | | | | | |
|-------------|----|----|----|----|----|----|------------------------------------|------------------------------------|
| Bit | 7 | 6 | 5 | 4 | 3 | 2 | 1 | 0 |
| | 0 | 0 | 0 | 0 | 0 | 0 | Horizontal Crop End Position Bit 9 | Horizontal Crop End Position Bit 8 |
| Type | NA | NA | NA | NA | NA | NA | RW | RW |
| Reset state | 0 | 0 | 0 | 0 | 0 | 0 | 1 | 0 |

Bits 9-0:

Horizontal Crop End Position
The register is for controlling Horizontal Crop End Position

REG[74h]

| | | | | | | | | |
|-------------|------------------------------------|------------------------------------|------------------------------------|------------------------------------|------------------------------------|------------------------------------|------------------------------------|------------------------------------|
| Bit | 7 | 6 | 5 | 4 | 3 | 2 | 1 | 0 |
| | Vertical Crop Start Position Bit 7 | Vertical Crop Start Position Bit 6 | Vertical Crop Start Position Bit 5 | Vertical Crop Start Position Bit 4 | Vertical Crop Start Position Bit 3 | Vertical Crop Start Position Bit 2 | Vertical Crop Start Position Bit 1 | Vertical Crop Start Position Bit 0 |
| Type | RW | RW | RW | RW | RW | RW | RW | RW |
| Reset state | 0 | 0 | 0 | 0 | 0 | 0 | 0 | 0 |

REG[75h]

| | | | | | | | | |
|-------------|----|----|----|----|----|----|------------------------------------|------------------------------------|
| Bit | 7 | 6 | 5 | 4 | 3 | 2 | 1 | 0 |
| | 0 | 0 | 0 | 0 | 0 | 0 | Vertical Crop Start Position Bit 9 | Vertical Crop Start Position Bit 8 |
| Type | NA | NA | NA | NA | NA | NA | RW | RW |
| Reset state | 0 | 0 | 0 | 0 | 0 | 0 | 0 | 0 |

Bits 9-0:

Vertical Crop Start Position
The register is for controlling Vertical Crop Start Position

REG[76h]

| | | | | | | | | |
|-------------|----------------------------------|----------------------------------|----------------------------------|----------------------------------|----------------------------------|----------------------------------|----------------------------------|----------------------------------|
| Bit | 7 | 6 | 5 | 4 | 3 | 2 | 1 | 0 |
| | Vertical Crop End Position Bit 7 | Vertical Crop End Position Bit 6 | Vertical Crop End Position Bit 5 | Vertical Crop End Position Bit 4 | Vertical Crop End Position Bit 3 | Vertical Crop End Position Bit 2 | Vertical Crop End Position Bit 1 | Vertical Crop End Position Bit 0 |
| Type | RW | RW | RW | RW | RW | RW | RW | RW |
| Reset state | 1 | 1 | 0 | 1 | 1 | 1 | 1 | 1 |

REG[77h]

| | | | | | | | | |
|-------------|----|----|----|----|----|----|----------------------------------|----------------------------------|
| Bit | 7 | 6 | 5 | 4 | 3 | 2 | 1 | 0 |
| | 0 | 0 | 0 | 0 | 0 | 0 | Vertical Crop End Position Bit 9 | Vertical Crop End Position Bit 8 |
| Type | NA | NA | NA | NA | NA | NA | RW | RW |
| Reset state | 0 | 0 | 0 | 0 | 0 | 0 | 0 | 1 |

Bits 9-0:

Vertical Crop End Position

The register is for controlling Vertical Crop End Position

REG[78h]

| | | | | | | | | |
|-------------|----|----|----|----|----|----|----------------------|----------------------|
| Bit | 7 | 6 | 5 | 4 | 3 | 2 | 1 | 0 |
| | 0 | 0 | 0 | 0 | 0 | 0 | Field Ajustment EVEN | Field Adjustment ODD |
| Type | NA | NA | NA | NA | NA | NA | RW | RW |
| Reset state | 0 | 0 | 0 | 0 | 0 | 0 | 0 | 0 |

Bit 1:

Odd Field Adjustment

This bit is for controlling 1 line delay capture in odd field

When this bit = 1, vertical crop start and end position will shift one in odd field only.

When this bit = 0, normal operation.

Bit 0:

Even Field Adjustment

This bit is for controlling 1 line delay capture in even fields

When this bit = 1, vertical crop start and end position will shift one in the even field only.

When this bit = 0, normal operation.

Remark: The 1 delay capture is required in different field when the interlace video signal without HVALID and VVALID control signal. It is because interlace mode HS and VS have a half line shift to indicate the field change.

7.4 DSP Control Register

REG[81h]

| | | | | | | | | |
|-------------|----|----|----|----|----|----|----|--------------|
| Bit | 7 | 6 | 5 | 4 | 3 | 2 | 1 | 0 |
| | 0 | 0 | 0 | 0 | 0 | 0 | 0 | Gamma Enable |
| Type | NA | NA | NA | NA | NA | NA | NA | RW |
| Reset state | 0 | 0 | 0 | 0 | 0 | 0 | 0 | 0 |

Bit 1: **Gamma Enable**
 This bit is to enable the Gamma Correction.
 When this bit = 1, Gamma Correction is enabled.
 When this bit = 0, Gamma Correction is disabled.

REG[82h]

| | | | | | | | | |
|-------------|--|--|--|--|--|--|--|--|
| Bit | 7 | 6 | 5 | 4 | 3 | 2 | 1 | 0 |
| | Gamma Look-up Table LUT0/ Low Value of Color | Gamma Look-up Table LUT0/ Low Value of Color | Gamma Look-up Table LUT0/ Low Value of Color | Gamma Look-up Table LUT0/ Low Value of Color | Gamma Look-up Table LUT0/ Low Value of Color | Gamma Look-up Table LUT0/ Low Value of Color | Gamma Look-up Table LUT0/ Low Value of Color | Gamma Look-up Table LUT0/ Low Value of Color |
| Type | RW | RW | RW | RW | RW | RW | RW | RW |
| Reset state | 0 | 0 | 0 | 0 | 0 | 0 | 0 | 0 |

Bits 7-0: **Gamma Look-up Table LUT0.**
 This register is used for the Gamma Look-up Table LUT0 and low bound of the color input.

REG[83h]

| | | | | | | | | |
|-------------|--------------------------|--------------------------|--------------------------|--------------------------|--------------------------|--------------------------|--------------------------|--------------------------|
| Bit | 7 | 6 | 5 | 4 | 3 | 2 | 1 | 0 |
| | Gamma Look-up Table LUT1 | Gamma Look-up Table LUT1 | Gamma Look-up Table LUT1 | Gamma Look-up Table LUT1 | Gamma Look-up Table LUT1 | Gamma Look-up Table LUT1 | Gamma Look-up Table LUT1 | Gamma Look-up Table LUT1 |
| Type | RW | RW | RW | RW | RW | RW | RW | RW |
| Reset state | 0 | 1 | 0 | 1 | 1 | 0 | 1 | 1 |

Bits 7-0: **Gamma Look-up Table LUT1.**
 This register is used for Gamma Look-up Table LUT1.

REG[84h]

| | | | | | | | | |
|-------------|--------------------------|--------------------------|--------------------------|--------------------------|--------------------------|--------------------------|--------------------------|--------------------------|
| Bit | 7 | 6 | 5 | 4 | 3 | 2 | 1 | 0 |
| | Gamma Look-up Table LUT2 | Gamma Look-up Table LUT2 | Gamma Look-up Table LUT2 | Gamma Look-up Table LUT2 | Gamma Look-up Table LUT2 | Gamma Look-up Table LUT2 | Gamma Look-up Table LUT2 | Gamma Look-up Table LUT2 |
| Type | RW | RW | RW | RW | RW | RW | RW | RW |
| Reset state | 1 | 0 | 0 | 0 | 0 | 0 | 0 | 0 |

Bits 7-0: **Gamma Look-up Table LUT2.**
 This register used for Gamma Look-up Table LUT2.

REG[85h]

| | | | | | | | | |
|-------------|--------------------------|--------------------------|--------------------------|--------------------------|--------------------------|--------------------------|--------------------------|--------------------------|
| Bit | 7 | 6 | 5 | 4 | 3 | 2 | 1 | 0 |
| | Gamma Look-up Table LUT3 | Gamma Look-up Table LUT3 | Gamma Look-up Table LUT3 | Gamma Look-up Table LUT3 | Gamma Look-up Table LUT3 | Gamma Look-up Table LUT3 | Gamma Look-up Table LUT3 | Gamma Look-up Table LUT3 |
| Type | RW | RW | RW | RW | RW | RW | RW | RW |
| Reset state | 1 | 0 | 0 | 1 | 1 | 1 | 0 | 1 |

Bits 7-0: **Gamma Look-up Table LUT3.**
 This register used for Gamma Look-up Table LUT3.

REG[86h]

| Bit | 7 | 6 | 5 | 4 | 3 | 2 | 1 | 0 |
|-------------|--------------------------|--------------------------|--------------------------|--------------------------|--------------------------|--------------------------|--------------------------|--------------------------|
| | Gamma Look-up Table LUT4 | Gamma Look-up Table LUT4 | Gamma Look-up Table LUT4 | Gamma Look-up Table LUT4 | Gamma Look-up Table LUT4 | Gamma Look-up Table LUT4 | Gamma Look-up Table LUT4 | Gamma Look-up Table LUT4 |
| Type | RW | RW | RW | RW | RW | RW | RW | RW |
| Reset state | 1 | 0 | 1 | 1 | 0 | 1 | 0 | 1 |

Bits 7-0:

Gamma Look-up Table LUT4.

This register used for Gamma Look-up Table LUT4.

REG[87h]

| Bit | 7 | 6 | 5 | 4 | 3 | 2 | 1 | 0 |
|-------------|--------------------------|--------------------------|--------------------------|--------------------------|--------------------------|--------------------------|--------------------------|--------------------------|
| | Gamma Look-up Table LUT5 | Gamma Look-up Table LUT5 | Gamma Look-up Table LUT5 | Gamma Look-up Table LUT5 | Gamma Look-up Table LUT5 | Gamma Look-up Table LUT5 | Gamma Look-up Table LUT5 | Gamma Look-up Table LUT5 |
| Type | RW | RW | RW | RW | RW | RW | RW | RW |
| Reset state | 1 | 1 | 0 | 0 | 1 | 0 | 1 | 0 |

Bits 7-0:

Gamma Look-up Table LUT5.

This register used for Gamma Look-up Table LUT5.

REG[88h]

| Bit | 7 | 6 | 5 | 4 | 3 | 2 | 1 | 0 |
|-------------|--------------------------|--------------------------|--------------------------|--------------------------|--------------------------|--------------------------|--------------------------|--------------------------|
| | Gamma Look-up Table LUT6 | Gamma Look-up Table LUT6 | Gamma Look-up Table LUT6 | Gamma Look-up Table LUT6 | Gamma Look-up Table LUT6 | Gamma Look-up Table LUT6 | Gamma Look-up Table LUT6 | Gamma Look-up Table LUT6 |
| Type | RW | RW | RW | RW | RW | RW | RW | RW |
| Reset state | 1 | 1 | 0 | 1 | 1 | 1 | 1 | 0 |

Bits 7-0:

Gamma Look-up Table LUT6.

This register used for Gamma Look-up Table LUT6.

REG[89h]

| Bit | 7 | 6 | 5 | 4 | 3 | 2 | 1 | 0 |
|-------------|--------------------------|--------------------------|--------------------------|--------------------------|--------------------------|--------------------------|--------------------------|--------------------------|
| | Gamma Look-up Table LUT7 | Gamma Look-up Table LUT7 | Gamma Look-up Table LUT7 | Gamma Look-up Table LUT7 | Gamma Look-up Table LUT7 | Gamma Look-up Table LUT7 | Gamma Look-up Table LUT7 | Gamma Look-up Table LUT7 |
| Type | RW | RW | RW | RW | RW | RW | RW | RW |
| Reset state | 1 | 1 | 1 | 0 | 1 | 1 | 1 | 1 |

Bits 7-0:

Gamma Look-up Table LUT7.

This register used for Gamma Look-up Table LUT7.

REG[8Ah]

| Bit | 7 | 6 | 5 | 4 | 3 | 2 | 1 | 0 |
|-------------|---|---|---|---|---|---|---|---|
| | Gamma Look-up Table LUT8/ High Value of Color | Gamma Look-up Table LUT8/ High Value of Color | Gamma Look-up Table LUT8/ High Value of Color | Gamma Look-up Table LUT8/ High Value of Color | Gamma Look-up Table LUT8/ High Value of Color | Gamma Look-up Table LUT8/ High Value of Color | Gamma Look-up Table LUT8/ High Value of Color | Gamma Look-up Table LUT8/ High Value of Color |
| Type | RW | RW | RW | RW | RW | RW | RW | RW |
| Reset state | 1 | 1 | 1 | 1 | 1 | 1 | 1 | 1 |

Bits 7-0:

Gamma Look-up Table LUT8.

This register used for Gamma Look-up Table LUT8 and upper bound of the color input.

REG[90h]

| | | | | | | | | |
|-------------|----------|----------|---------------------|---------------------|------------|----------------|------------------|------------------|
| Bit | 7 | 6 | 5 | 4 | 3 | 2 | 1 | 0 |
| | CSC Mode | CSC Mode | RGB to YCBCR Enable | YCBCR to RGB Enable | Monochrome | Vertical Scale | Horizontal Scale | Horizontal Scale |
| Type | RW | RW | RW | RW | RW | RW | RW | RW |
| Reset state | 0 | 0 | 0 | 0 | 0 | 0 | 0 | 0 |

Bits 7-6:

CSC Mode

This register is for the selection of color space conversion

| Option | Color Space Conversion |
|--------|------------------------|
| 00 | SMTPE 170M |
| 01 | CIRR 601 |
| 10 | BT 601 |
| 11 | Not allowed |

Bit 5:

RGB to YCBCR Enable

This bit is enable the RGB to YCBCR color space conversion
When this bit = 1, RGB to YCBCR color space conversion is enabled.
When this bit = 0, normal.

Bit 4:

YCBCR to RGB Enable

This bit enables the YCBCR to RGB color space conversion
When this bit = 1, YCBCR to RGB color space conversion is enabled.
When this bit = 0, normal.

Bit 3:

Monochrome

This bit is for setting monochrome color output. In RGB video signal, REG[90] bit 5 **MUST** be set at 1.

When this bit = 1, monochrome filter is enabled.

When this bit = 0, normal.

Bit 2:

Vertical Scale

The register is for selection of the Vertical scale.
Vertical crop start REG[75-74] and vertical crop end register setting REG[77-76] must be set appropriately for the selected vertical scale..

$$\text{Cropped Vertical Size} = \text{REG}[77-76] - \text{REG}[75-74] + 1;$$

| Option | Cropped Vertical Size | Vertical Scale |
|---------------------------------|-----------------------|----------------|
| Interlace Video Source | | |
| 0 | 240 | 1:1 |
| 1 | 288 | 6:5 |
| Progressive Video Source | | |
| 0 | 240 | 1:1 |
| 1 | 576 | 6:5 |

Bits 1-0:

Horizontal Scale

The register is for selection of Horizontal scale.
Horizontal crop start REG[71-70] and horizontal crop end register setting REG[73-72].must be set appropriately for the selected horizontal scale.

$$\text{Cropped Horizontal Size} = \text{REG}[73-72] - \text{REG}[71-70] + 1;$$

| Option | Cropped Horizontal Size | Horizontal Scale |
|--------|-------------------------|------------------|
| 00 | 640 | 1:1 |
| 01 | 768 | 6:5 |
| 10 | 720 | 9:8 |
| 11 | 704 | 11:10 |

REG[98h]

| | | | | | | | | |
|----------------|--------------------------|--------------------------|--------------------------|--------------------------|--------------------------|--------------------------|--------------------------|--------------------------|
| Bit | 7 | 6 | 5 | 4 | 3 | 2 | 1 | 0 |
| | Y Component Offset | Y Component Offset | Y Component Offset | Y Component Offset | Y Component Offset | Y Component Offset | Y Component Offset | Y Component Offset |
| Type | RW | RW | RW | RW | RW | RW | RW | RW |
| Reset state | 0 | 0 | 0 | 0 | 0 | 0 | 0 | 0 |

Bits 7-0:

Y component offset

This register is for tuning the offset in the Y component. It is only work when YCBCR to RGB color space conversion is enabled.

REG[99h]

| | | | | | | | | |
|----------------|---------------------------|---------------------------|---------------------------|---------------------------|---------------------------|---------------------------|---------------------------|---------------------------|
| Bit | 7 | 6 | 5 | 4 | 3 | 2 | 1 | 0 |
| | CB Component Offset | CB Component Offset | CB Component Offset | CB Component Offset | CB Component Offset | CB Component Offset | CB Component Offset | CB Component Offset |
| Type | RW | RW | RW | RW | RW | RW | RW | RW |
| Reset state | 0 | 0 | 0 | 0 | 0 | 0 | 0 | 0 |

Bits 7-0:

CB component offset

This register is for tuning the offset in the Y component. It is only work when YCBCR to RGB color space conversion is enabled.

REG[9Ah]

| | | | | | | | | |
|----------------|---------------------------|---------------------------|---------------------------|---------------------------|---------------------------|---------------------------|---------------------------|---------------------------|
| Bit | 7 | 6 | 5 | 4 | 3 | 2 | 1 | 0 |
| | CR Component Offset | CR Component Offset | CR Component Offset | CR Component Offset | CR Component Offset | CR Component Offset | CR Component Offset | CR Component Offset |
| Type | RW | RW | RW | RW | RW | RW | RW | RW |
| Reset state | 0 | 0 | 0 | 0 | 0 | 0 | 0 | 0 |

Bits 7-0:

CR component offset

This register is for tuning the offset in the Y component. It is only work when YCBCR to RGB color space conversion is enabled.

REG[9Bh]

| | | | | | | | | |
|----------------|----|----|----|----|----|----|----|----|
| Bit | 7 | 6 | 5 | 4 | 3 | 2 | 1 | 0 |
| | 0 | 0 | 0 | 0 | 0 | 0 | 0 | 0 |
| Type | NA | NA | NA | NA | NA | NA | NA | NA |
| Reset state | 0 | 0 | 0 | 0 | 0 | 0 | 0 | 0 |

REG[9Ch]

| | | | | | | | | |
|----------------|----|----|----|----|----|----|----|----|
| Bit | 7 | 6 | 5 | 4 | 3 | 2 | 1 | 0 |
| | 0 | 0 | 0 | 0 | 0 | 0 | 0 | 0 |
| Type | NA | NA | NA | NA | NA | NA | NA | NA |
| Reset state | 0 | 0 | 0 | 0 | 0 | 0 | 0 | 0 |

7.5 Digital Video Interface Control Register

| | | REG[C0h] | | | | | | | |
|-------------|--|-------------------------------|----------------------------------|----|-------------------------|----------------------|----------------------------|----------------------------|----|
| Bit | | 7 | 6 | 5 | 4 | 3 | 2 | 1 | 0 |
| | | Select Frame Pulse Generation | Internal Line & Frame Generation | 0 | Field Signal Generation | Field Signal Control | Input Data Width Selection | Input Data Width Selection | 0 |
| Type | | RW | RW | NA | RW | RW | RW | RW | NA |
| Reset state | | 0 | 0 | 0 | 1 | 0 | 1 | 0 | 0 |

Bit 7: Select Frame Pulse Generation
 This bit is for controlling the internal frame pulse generation
 When this bit = 1, the frame pulse signal is generated by internal Vsync Signal.
 When this bit = 0, the frame pulse signal is generated by Field Signal.

Bit 6: Internal Line and Frame Signal Generation
 This bit is for internal testing only. In normal operation, it **MUST** be set to 0.

Bit 4: Field Signal Generation
 This bit is for selection of Field signal generation when REG[C1] bit 3 = 0 and REG[C2] bit 6 = 0.

When this bit = 1, the Field signal is generated by the internal new frame signal.
 When the progressive video source is operating in the source field stereo mode without an external FIELD signal control, this bit **MUST** be set at 0.
 When this bit = 0, the Field signal is selected by external FIELD input pin.

Bit 3: Field Signal Control
 This bit is for control the polarity of FIELD signal.
 When this bit = 1, inverse the input FIELD signal.
 When this bit = 0, bypass the input FIELD signal.

Bits 2-1: Input Data Width Selection
 This register is for setting input data width

| Option | Input Data Width |
|--------|------------------|
| 00 | 8-bit |
| 01 | 16-bit |
| 10, 11 | 24-bit |

| | | REG[C1h] | | | | | | | |
|-------------|--|----------|----|-----------------------|-----------------------|-----------------------|------------------------|----|-----------------------------|
| Bit | | 7 | 6 | 5 | 4 | 3 | 2 | 1 | 0 |
| | | 0 | 0 | Active Signal Control | Active Signal Control | Active Signal Control | SAV/ EAV Field Control | 0 | Active Video Region Control |
| Type | | NA | NA | RW | RW | RW | RW | NA | RW |
| Reset state | | 0 | 0 | 0 | 0 | 0 | 0 | 0 | 1 |

Bit 5-3: Active Signal Control
 This register is for the selection of the active signal.

| Option | Active Signal |
|--------|---|
| xx1 | Decoded from SAV/EAV packet |
| x10 | Control by HVALID only |
| 000 | Control by HVALID and DVALID/VVALID which depends on REG[C1] bit 1. |
| 100 | VVALID will not be used as control signal |

Bit 2: SAV-EAV Field Control
 This bit is for the selection of the Field signal
 When this bit = 1, the Field signal is generated by the SAV-EAV packet

When this bit = 0, the generation of the Field signal depends on the REG[C0] bit 4 and REG[C1] bit 6.

Bit 0: Active Video Region Control
 This bit is for controlling the active video region into video data processing.
 When this bit = 1, the active video is control by the HVALID and DVALID signal.
 When this bit = 0, the active video is control by the HVALID and VVALID signal.

| | | REG[C2h] | | | | | | | |
|-------------|--|-----------------|--------------------|----|----------------------|----------------------|------------------------|------------------------|----|
| | | 7 | 6 | 5 | 4 | 3 | 2 | 1 | 0 |
| Bit | | 0 | Field SYNC Control | 0 | VSYNC Signal Control | HSYNC Signal Control | VSYNC Polarity Control | HSYNC polarity Control | 0 |
| Type | | NA | RW | NA | RW | RW | RW | RW | NA |
| Reset state | | 0 | 0 | 0 | 0 | 0 | 1 | 0 | 0 |

Bit 6: Field SYNC Control
 When this bit = 1 and REG[C1] bit 2 = 0, the Field signal is generated by VSYNC and HSYNC.

Bit 4: VSYNC Signal Control
 When this bit = 0, the generation of the Field signal depends on the REG[C0] bit 4.

This bit is for controlling the generation of the VSYNC signal
 When this bit = 1 and REG[C3] bit 0 = 0, VSYNC is generated by VVALID.

Bit 3: HSYNC Signal Control
 When this bit = 0 and REG[C3] bit 0 = 0, VSYNC is generated by external VS.

This bit is for controlling the generation of the HSYNC signal
 When this bit = 1 and REG[C3] bit 0 = 0, the HSYNC is generated by HVALID.
 When this bit = 0 and REG[C3] bit 0 = 0, the HSYNC is generated by external HS.

Bit 2: VSYNC Polarity Control
 This bit is for controlling the polarity of the VSYNC signal
 When this bit = 1, inverse the VSYNC signal.

Bit 1: HSYNC Polarity Control
 When this bit = 0, bypass the VSYNC signal.

This bit is for controlling the polarity of the HSYNC signal
 When this bit = 1, inverse the HSYNC signal.
 When this bit = 0, bypass the HSYNC signal.

| | | REG[C3h] | | | | | | | |
|-------------|--|-----------------|----|----|----|----|----|-------------------------|----------------------|
| | | 7 | 6 | 5 | 4 | 3 | 2 | 1 | 0 |
| Bit | | 0 | 0 | 0 | 0 | 0 | 0 | RGB565 Format Selection | SAV/EAV SYNC Control |
| Type | | NA | NA | NA | NA | NA | NA | RW | RW |
| Reset state | | 0 | 0 | 0 | 0 | 0 | 0 | 0 | 0 |

Bit 1: RGB565 format Selection
 This bit is for the selection of the RGB565 video input format
 When this bit = 1 and REG[C0] bits 2-1 = 0x01, RGB565 video input format is selected.
 When this bit = 0, otherwise.

Bit 0: SAV/EAV SYNC control
 This bit is for the selection of HSYNC /VSYNC signal
 When this bit = 1, HSYNC/VSYNC is generated by the SAV/EAV packet
 When this bit = 0, HSYNC/VSYNC depends on REG[C2] bit 4 and bit 3.

8 Maximum Ratings

Table 10: Maximum Ratings (Voltage Referenced to V_{SS})

| Symbol | Parameter | Value | Unit |
|------------------|--|-----------------|------|
| V _{DD} | Digital Supply Voltage relative to VSS | -0.3 to 3.6 | V |
| AV _{DD} | Analog Supply Voltage relative to VSS | -0.3 to 3.6 | V |
| V _{IN} | Voltage on any pin relative to VSS | -0.3 to VDD+0.3 | V |
| T _{OPT} | Operating Temperature | -30 to +85 | °C |
| T _{STG} | Storage Temperature | -40 to 125 | °C |

9 DC Characteristics

9.1 Recommended DC Operating Conditions

Table 11: DC Characteristics $T_A = 25^\circ\text{C}$, $V_{DD} = 3.3\text{V} \pm 5\%$, $V_{SS} = 0\text{V}$

| Symbol | Parameter | Test Condition | Min | Typ | Max | Unit |
|-----------------|--|--|-------------|-----|-------------|---------------|
| V_{DD} | Digital Supply Voltage | $V_{DD} = AV_{DD}$ | 3.0 | 3.3 | 3.6 | V |
| AV_{DD} | Analog Supply Voltage | | | | | |
| V_{IL} | Input low voltage | | - | - | $0.3V_{DD}$ | V |
| V_{IH} | Input high voltage | | $0.7V_{DD}$ | - | - | V |
| V_{OL} | Output low voltage | 4mA buffer, $I_{OL} = 4\text{mA}$, 8mA buffer, $I_{OL} = 8\text{mA}$ (HCK0, HCK1) | - | - | 0.4 | V |
| V_{OH} | Output high voltage | 4mA buffer, $I_{OL} = 4\text{mA}$ 8mA buffer, $I_{OL} = 8\text{mA}$ (HCK0, HCK1) | 2.4 | - | | V |
| I_{DVDD_slp} | Digital Power supply shutdown current | | -20 | - | 20 | μA |
| I_{AVDD_slp} | Analog Power supply shutdown current | | -20 | - | 20 | μA |
| I_{DVDD} | Digital Power supply operating current | For CLX2 frequency = 27MHz | - | 5 | 15 | mA |
| I_{AVDD} | Analog Power supply operating current | | - | 25 | 35 | mA |
| IOUT | DAC output current | FDASJ connect to gnd with 3k resistor AC COM mode | 5.9 | 7 | 8.1 | mA |

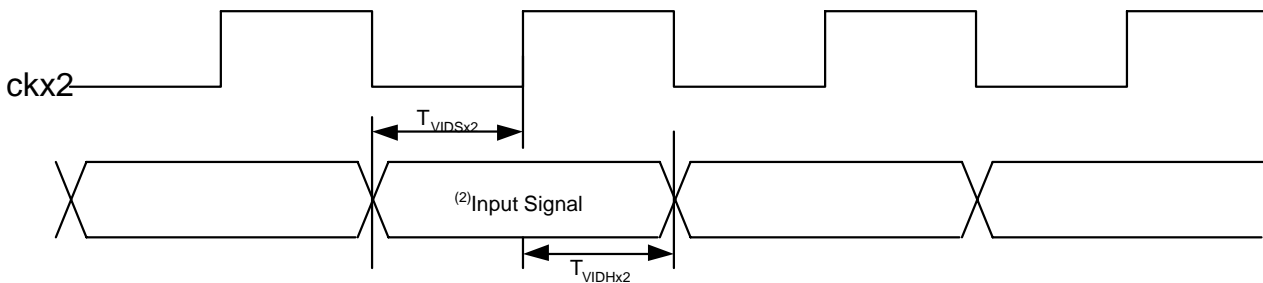
10 AC Characteristics

Table 12: AC Characteristics (Unless otherwise specified, Voltage Referenced to VSS, VDD = 3.3V, TA = -30 to 85°C)

| Parameter | Symbol | MIN | TYP | MAX | Units |
|--------------------------------------|--------------|---------------------------|-----|----------------------|-------|
| CKX2 Input Frequency | f_{CKX2} | - | - | 36/60 ⁽¹⁾ | MHz |
| CKX2 Input Period | t_{CKX2T} | 27.8/16.67 ⁽¹⁾ | - | - | ns |
| CKX2 and Video Input Data Setup Time | t_{VIDSX2} | 5 | - | - | ns |
| CKX2 and Video Input Data Hold Time | t_{VIDHX2} | 5 | - | - | ns |
| CK and Video Input Data Setup Time | t_{VIDS} | 5 | - | - | ns |
| CK and Video Input Data Hold Time | t_{VIDH} | 5 | - | - | ns |

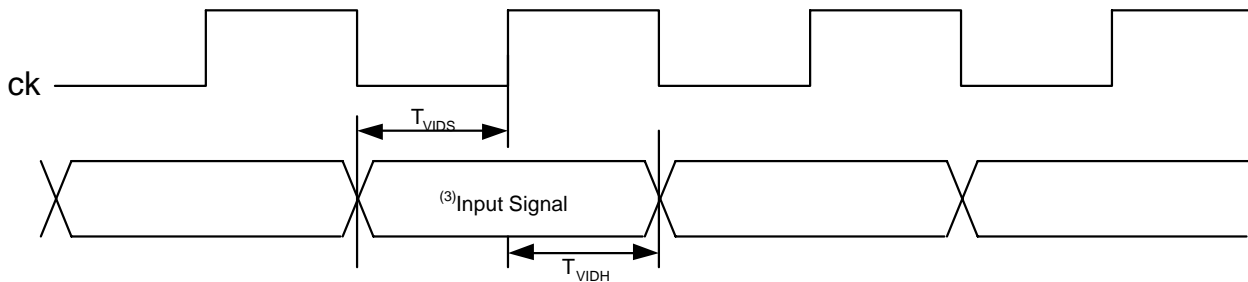
Note (1): This mode is for progressive input video signal source only

Figure 18 -8-bit Video Data Input Timing



Note (2): Input Signal refer to DV[15-8], Dvalid, Hvalid, Vvalid, Vs, Hs, Field

Figure 19 -16/24-bit Video Data Input Timing

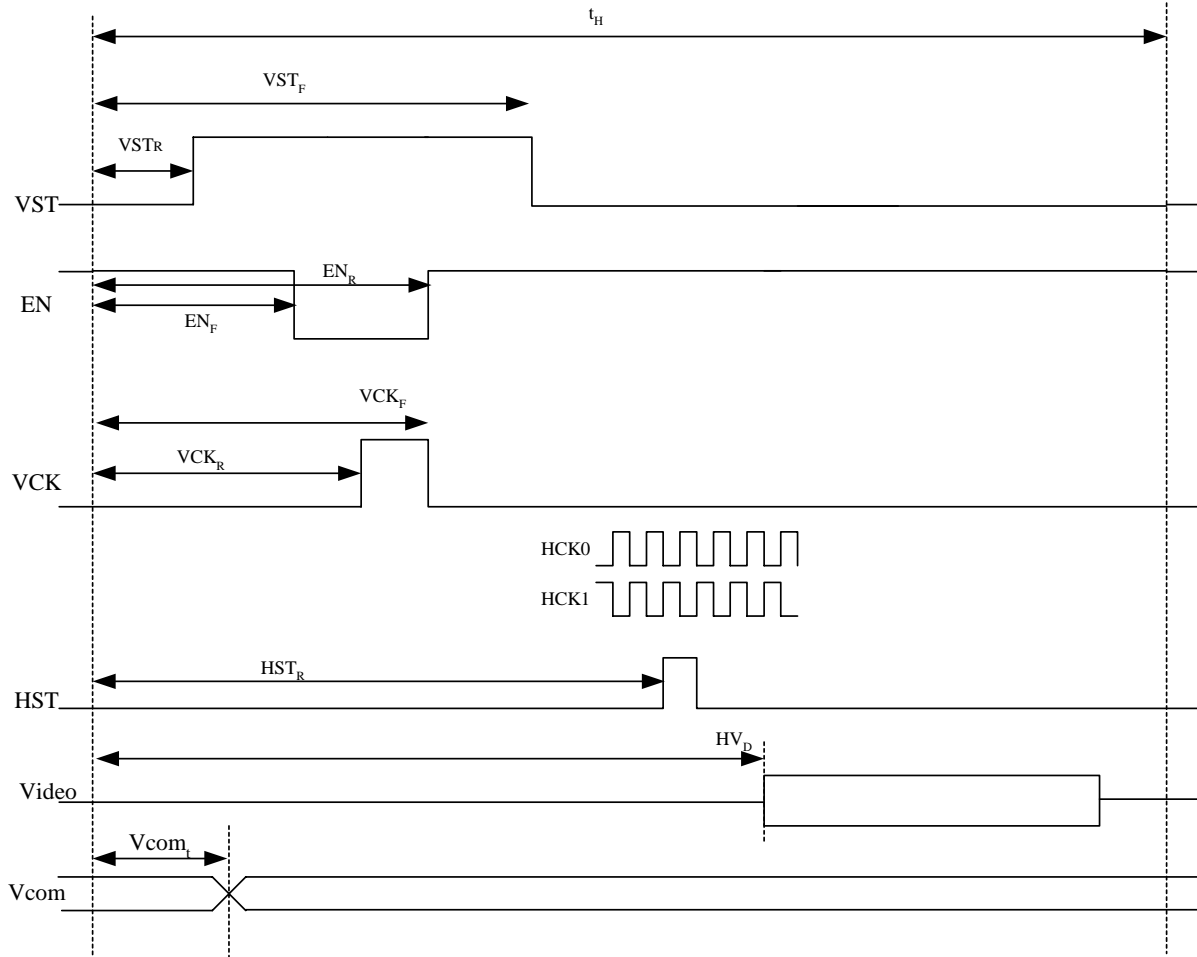


Note (3): Input Signal refer to DV[23-0], Dvalid, Hvalid, Vvalid, Vs, Hs, Field

Table 13: Display Panel Interface Timing

| Parameter | Symbol | Min | Typ | Max | Units |
|--------------------------|---------------|----------------|------------|----------------|--------------|
| Frame Period | t_v | | 13.3-16.7 | | ms |
| Frame rate | $1/t_v$ | | 60-75 | | Hz |
| Line Period | t_H | | 26.7-31.7 | | μ s |
| Line Frequency | $1/t_H$ | | 31.5-37.5 | | kHz |
| Clock Period | t_{CP} | | 63.5-80 | | ns |
| Clock Frequency | $1/t_{CP}$ | | 12.5-15.75 | | MHz |
| Video sampling period | t_{PP} | $(t_{CP}/2)-5$ | | $(t_{CP}/2)+5$ | ns |
| HCK1-HCK2 clock skew | t_{CSK} | -5 | | 5 | ns |
| HST setup | t_{HS} | 20 | | | ns |
| HST hold | t_{HH} | 20 | | | ns |
| VCK high pulse Width | t_{KH} | 200 | | | ns |
| VST setup to VCK | t_{VHS} | 100 | | | ns |
| VST hold after VCK | t_{VHH} | 100 | | | ns |
| VCK to EN delay | t_{KED} | 200 | | | ns |
| EN to VCK delay | t_{EKD} | 200 | | | ns |
| EN to active video delay | t_{EVD} | 400 | | | ns |
| Active video to EN delay | t_{VED} | 400 | | | ns |

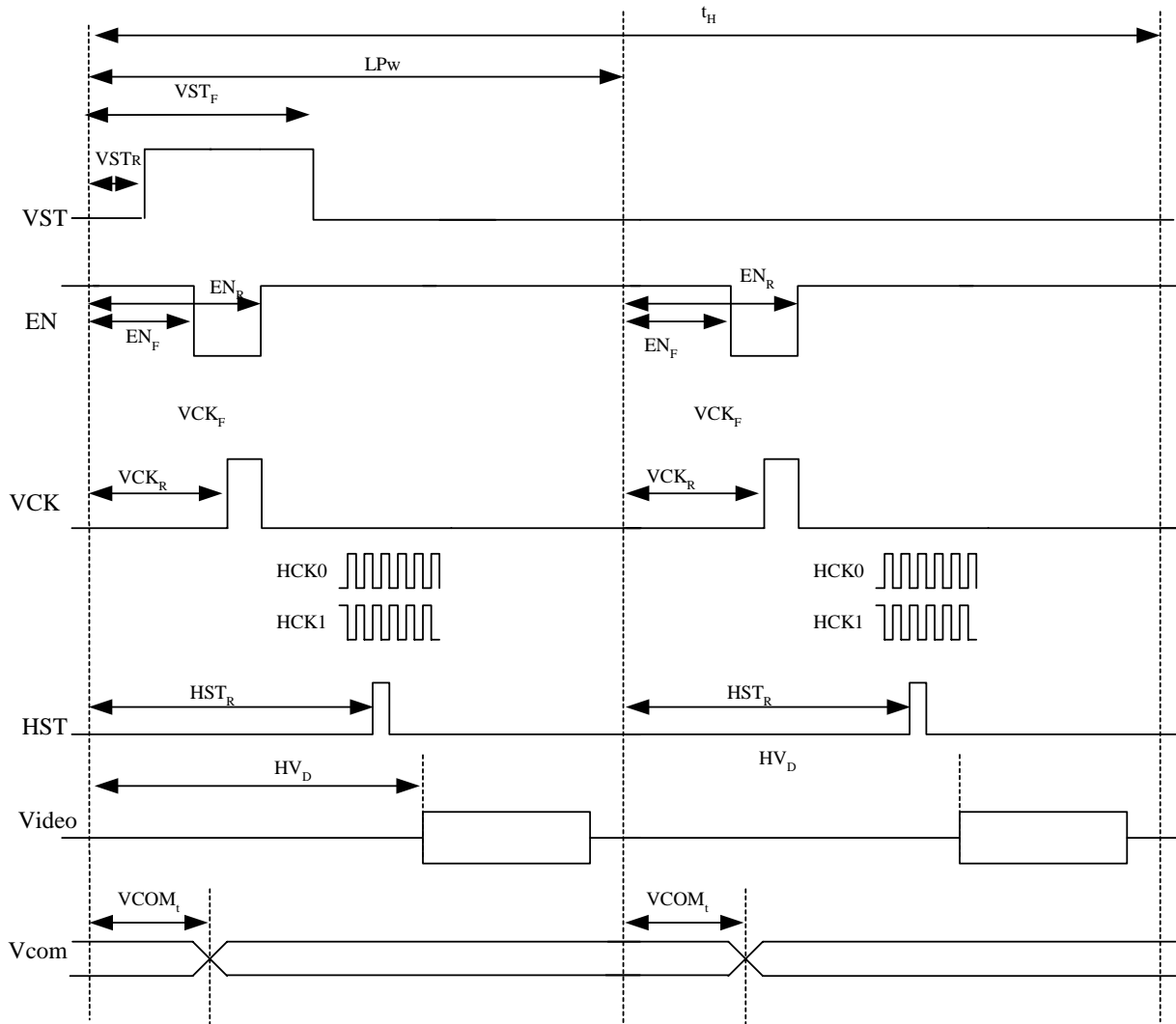
Figure 20: Display Panel Interface Timing Diagram of Progressive Mode



- VST_R = VST rising edge (10 bit control register and $t_{CP}/2$ resolution)
- VST_F = VST falling edge (10 bit control register and $t_{CP}/2$ resolution)
- EN_F = VST falling edge (10 bit control register and $t_{CP}/2$ resolution)
- EN_R = VST rising edge (10 bit control register and $t_{CP}/2$ resolution)
- VCK_R = VCK rising edge (10 bit control register and $t_{CP}/2$ resolution)
- VCK_F = VCK falling edge (10 bit control register and $t_{CP}/2$ resolution)
- HST_R = HST rising edge (10 bit control register and $t_{CP}/2$ resolution)
- $VCOM_t$ = VCOM sweeping Transition timing (10 bit control register and $t_{CP}/2$ resolution)
- HV_D = date fetch position (10 bit control register and $t_{CP}/2$ resolution)

Note: t_{CP} is the period of the HCLK0 and HCLK1 and t_H is the period of the line

Figure 21 -Display Panel Interface Timing Diagram of Deinterlace Mode



$VSTR$ = VST rising edge (10 bit control register and $t_{CP}/2$ resolution)

$VSTF$ = VST falling edge (10 bit control register and $t_{CP}/2$ resolution)

ENF = VST falling edge (10 bit control register and $t_{CP}/2$ resolution)

ENR = VST rising edge (10 bit control register and $t_{CP}/2$ resolution)

$VCKR$ = VCK rising edge (10 bit control register and $t_{CP}/2$ resolution)

$VCKF$ = VCK falling edge (10 bit control register and $t_{CP}/2$ resolution)

$HSTR$ = HST rising edge (10 bit control register and $t_{CP}/2$ resolution)

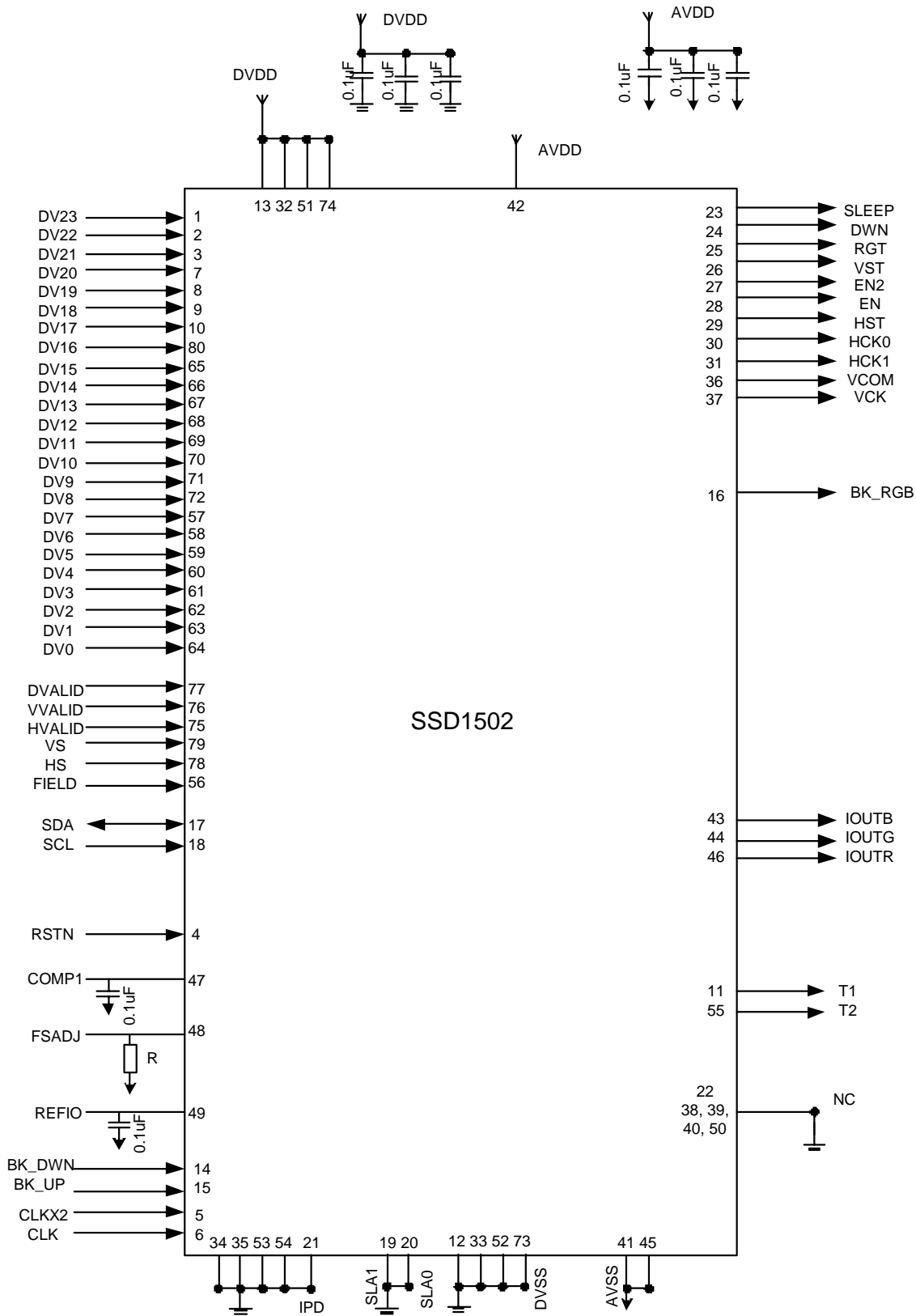
LPw = Second Line Position (10 bit control register and $t_{CP}/2$ resolution)

$VCOM_t$ = VCOM sweeping Transition timing (10 bit control register and $t_{CP}/2$ resolution)

HVD = data fetch position (10 bit control register and $t_{CP}/2$ resolution)

Note: t_{CP} is the period of the HCLK0 and HCLK1 and t_H is the period of the line

11 APPLICATION EXAMPLES



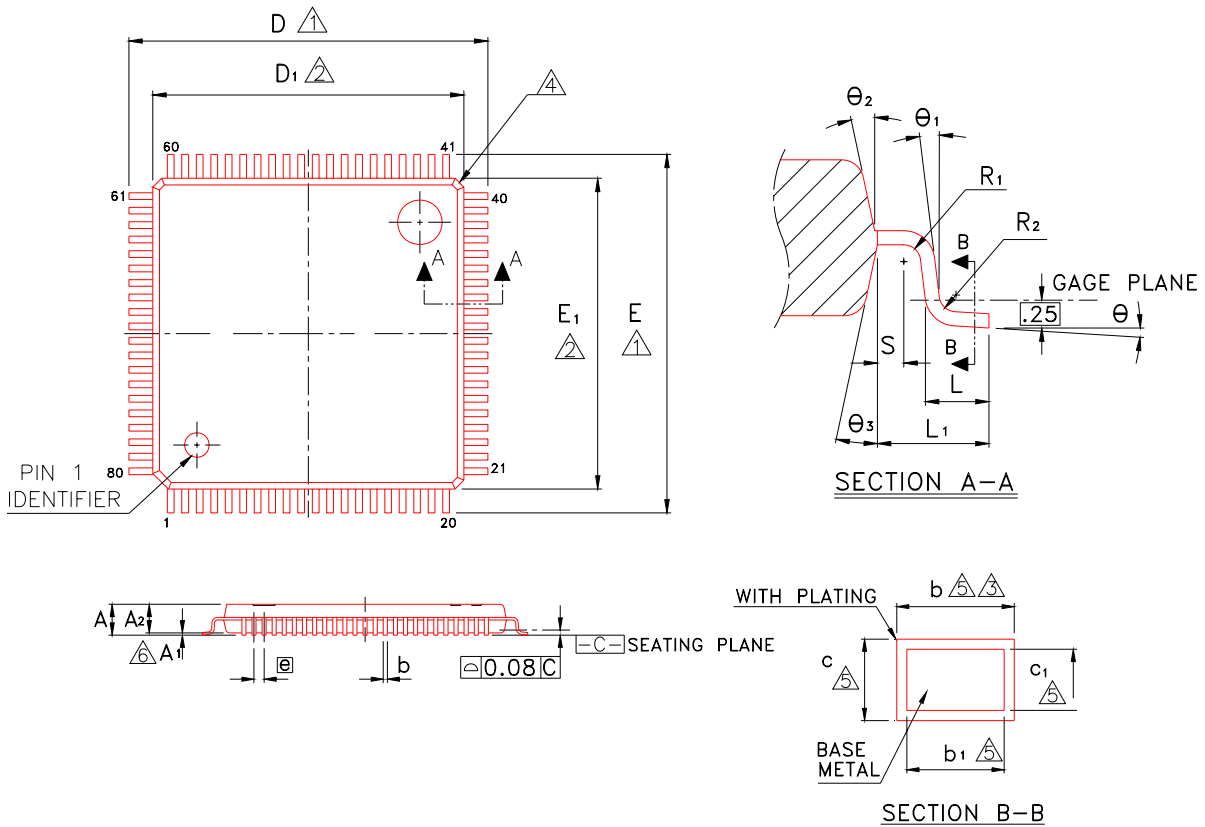
Note.

1. Different input video interface format requires different input connections. Please refer to Section 6.11.

2. For unused input pin DVALID, HVALID, VVALID, VS and HS, they **MUST** tie high. The unused input pin, they **MUST** be tied to high or low.
3. The resistor, which connects to the FSADJ pin, is used for controlling the output maximum current of the DAC.

12 Package Information

12.1 KCD-A900-QA outline dimension

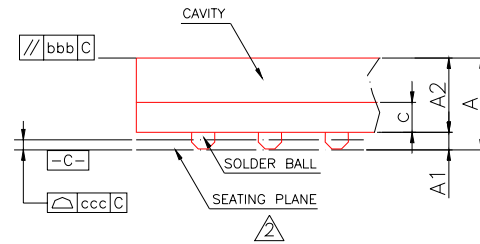
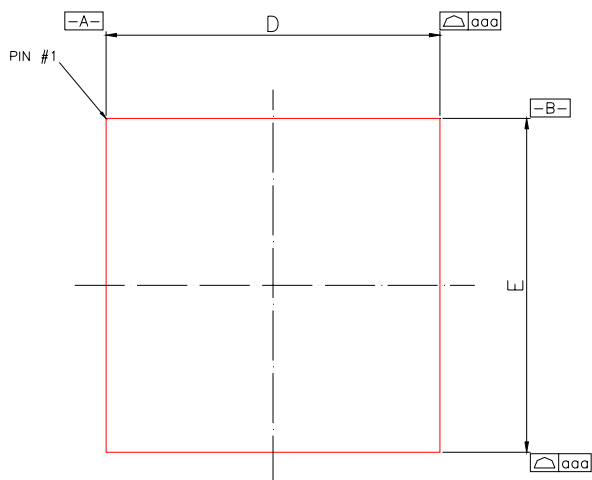


NOTE :

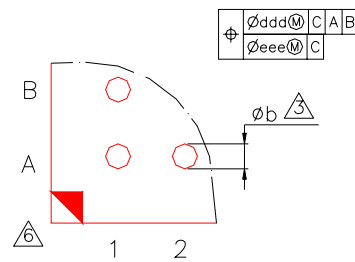
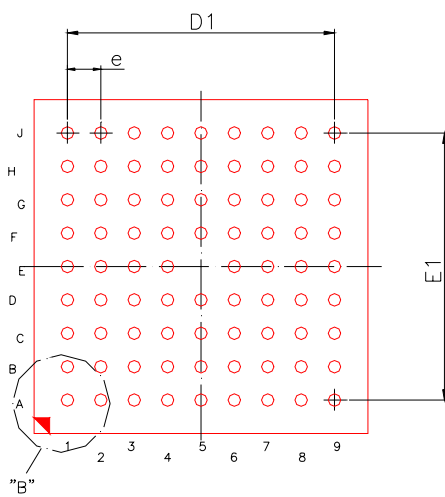
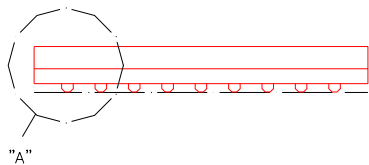
- ① TO BE DETERMINED AT SEATING PLANE $\boxed{-C-}$.
 - ② DIMENSIONS D_1 AND E_1 DO NOT INCLUDE MOLD PROTRUSION.
 D_1 AND E_1 ARE MAXIMUM PLASTIC BODY SIZE DIMENSIONS INCLUDING MOLD MISMATCH.
 - ③ DIMENSION b DOES NOT INCLUDE DAMBAR PROTRUSION.
DAMBAR CAN NOT BE LOCATED ON THE LOWER RADIUS OF THE FOOT.
 - ④ EXACT SHAPE OF EACH CORNER IS OPTIONAL.
 - ⑤ THESE DIMENSIONS APPLY TO THE FLAT SECTION OF THE LEAD BETWEEN 0.10 mm AND 0.25 mm FROM THE LEAD TIP.
 - ⑥ A_1 IS DEFINED AS THE DISTANCE FROM THE SEATING PLANE TO THE LOWEST POINT OF THE PACKAGE BODY.
7. CONTROLLING DIMENSION : MILLIMETER.
8. REFERENCE DOCUMENT : JEDEC MS-026 , BDD.

| Symbol | Dimension in mm | | | Dimension in inch | | |
|----------------------|-----------------|------|------|-------------------|-------|-------|
| | Min | Norm | Max | Min | Norm | Max |
| A | — | — | 1.20 | — | — | 0.047 |
| A₁ | 0.05 | — | 0.15 | 0.002 | — | 0.006 |
| A₂ | 0.95 | 1.00 | 1.05 | 0.037 | 0.039 | 0.041 |
| b | 0.17 | 0.20 | 0.27 | 0.007 | 0.008 | 0.011 |
| b₁ | 0.17 | 0.20 | 0.23 | 0.007 | 0.008 | 0.009 |
| c | 0.09 | — | 0.20 | 0.004 | — | 0.008 |
| c₁ | 0.09 | — | 0.16 | 0.004 | — | 0.006 |
| D | 14.00 BSC | | | 0.551 BSC | | |
| D₁ | 12.00 BSC | | | 0.472 BSC | | |
| E | 14.00 BSC | | | 0.551 BSC | | |
| E₁ | 12.00 BSC | | | 0.472 BSC | | |
| ⓐ | 0.50 BSC | | | 0.020 BSC | | |
| L | 0.45 | 0.60 | 0.75 | 0.018 | 0.024 | 0.030 |
| L₁ | 1.00 REF | | | 0.039 REF | | |
| R₁ | 0.08 | 0.15 | — | 0.003 | 0.006 | — |
| R₂ | 0.15 | 0.20 | 0.25 | 0.006 | 0.008 | 0.010 |
| S | 0.20 | — | — | 0.008 | — | — |
| θ | 0° | 3.5° | 7° | 0° | 3.5° | 7° |
| θ₁ | 0° | — | — | 0° | — | — |
| θ₂ | 11° | 12° | 13° | 11° | 12° | 13° |
| θ₃ | 11° | 12° | 13° | 11° | 12° | 13° |

12.2 SSD1502G32 outline dimension



DETAIL : "A"



DETAIL : "B"

| Symbol | Dimension in mm | | | Dimension in inch | | |
|--------|-----------------|------|------|-------------------|-------|-------|
| | MIN | NOM | MAX | MIN | NOM | MAX |
| A | --- | --- | 1.20 | --- | --- | 0.047 |
| A1 | 0.16 | 0.21 | 0.26 | 0.006 | 0.008 | 0.010 |
| A2 | 0.84 | 0.89 | 0.94 | 0.033 | 0.035 | 0.037 |
| c | 0.32 | 0.36 | 0.40 | 0.013 | 0.014 | 0.016 |
| D | 7.90 | 8.00 | 8.10 | 0.311 | 0.315 | 0.319 |
| E | 7.90 | 8.00 | 8.10 | 0.311 | 0.315 | 0.319 |
| D1 | --- | 6.40 | --- | --- | 0.252 | --- |
| E1 | --- | 6.40 | --- | --- | 0.252 | --- |
| e | --- | 0.80 | --- | --- | 0.031 | --- |
| b | 0.25 | 0.30 | 0.35 | 0.010 | 0.012 | 0.014 |
| aaa | 0.10 | | | 0.004 | | |
| bbb | 0.20 | | | 0.008 | | |
| ccc | 0.12 | | | 0.005 | | |
| ddd | 0.15 | | | 0.006 | | |
| eee | 0.08 | | | 0.003 | | |
| MD/ME | 9/9 | | | 9/9 | | |

NOTE :

1. CONTROLLING DIMENSION : MILLIMETER.

② PRIMARY DATUM C AND SEATING PLANE ARE DEFINED BY THE SPHERICAL CROWNS OF THE SOLDER BALLS.

③ DIMENSION b IS MEASURED AT THE MAXIMUM SOLDER BALL DIAMETER, PARALLEL TO PRIMARY DATUM C.

4. THERE SHALL BE A MINIMUM CLEARANCE OF 0.25mm BETWEEN THE EDGE OF THE SOLDER BALL AND THE BODY EDGE.

5. REFERENCE DOCUMENT : JEDEC MO-216

⑥ THE PATTERN OF PIN 1 FIDUCIAL IS FOR REFERENCE ONLY .

